

# standard efficiency



**SEDBUK D rated**

**mini C**

**mini S**

**Classic SE**

**Mexico**

**BOILERS**  
**ENGINEERED FOR PEACE OF MIND**



# contents

|  |       |   |       |
|--|-------|---|-------|
| the complete range   | 4-5   | Classic SE extras and accessories                           | 26-27 |
| Ideal mini C and mini S  | 6-9   | Mexico  | 28-32 |
| Ideal mini C and mini S fluing                                   | 10-13 | Mexico fluing   | 33-35 |
| Ideal mini C and mini S<br>fluing options and siting flexibility | 14-15 | Mexico and Classic SE fluing options and siting flexibility | 36-37 |
| Ideal mini C and mini S extras and accessories                   | 16-17 | support   | 38-39 |
| Classic SE   | 18-21 |   |       |
| Classic SE fluing  | 22-25 |   |       |

ATL  
A. T. L. L.

classic

# the complete range

No matter what you're looking for, you'll find that Ideal has a standard-efficiency boiler to suit your needs. These include the mini, Classic SE and Mexico boilers, which all offer unprecedented standards of reliability and excellent siting flexibility, as well as being Part L compliant with an energy efficiency rating of SEDBUK D. Just what you'd expect from a company that has achieved World Class Accreditation.

## World class manufacturing

Ideal is one of the most respected names in the heating industry and the only company in its field to have achieved 'World Class Manufacturer' accreditation in the prestigious IBM and London Business School UK manufacturing survey. For over 90 years we have been designing, refining and manufacturing appliances that are not only trusted by the trade, but also relied upon by homeowners the length and breadth of the country. Our Hull-based factory is part of only 2% of all manufacturing sites in the UK that have been independently judged as meeting the criteria for World Class Manufacturing status, while our superior manufacturing facilities mean that we can achieve 'right first time' quality. In accordance with the company's World Class status, we have adopted a programme of continuous improvement which ensures that we constantly measure and monitor our performance to drive improvement through innovation.

## Engineered for peace of mind

To ensure their reliability, each of our boilers is subjected to an extraordinarily stringent regime of product assessment. This includes rigorous application testing, as well as extensive laboratory and field trials.

## From a name you can depend on

The Ideal brand is one of the most respected in the heating business. It is trusted by the trade and relied upon by homeowners to provide a long lasting, first-class service in all kinds of different homes and for all manner of different applications. Ideal's reputation for reliability and innovation is backed by the commitment and dedication of everyone connected with the company to deliver cost-effective, high-quality products and solutions, all backed by an unbeatable customer and after-sales service.

## Glossary of terms

FF = fan-flued boiler

RS = room sealed boiler

CF = open chimney flued boiler

TRV = thermostatic radiator valve

CH = central heating

DHW = domestic hot water

PCB = printed circuit board

The boilers featured in this brochure cover the majority of applications, namely: heat-only, combi and system. They provide access to a range of central heating outputs from 8.8 kW to 41 kW (30,000-140,000 Btu/h). So no matter what system design the appliance will be required to power, there is an Ideal standard-efficiency boiler that is perfect for the job.

## The mini C combi boiler

The mini C offers installers a wide variety of benefits, such as ease of installation, outstanding reliability and siting flexibility. Its compact size also ensures it can be flexibly sited and still provides plenty of room to work inside, without the need for cupboard ventilation. All of which makes the mini C the perfect solution for when space is at a premium.

## The mini S system boiler

The mini S also offers a wide variety of benefits when connecting to any fully pumped sealed system. Not only is this boiler easy to install, it is also incredibly reliable. Above all else, however, its compact dimensions provide excellent siting flexibility and allow it to be fitted without the need for cupboard ventilation.

## The Classic SE heat-only range

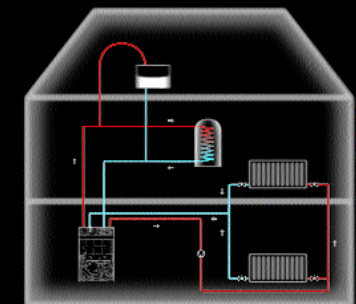
Suitable for installation on a fully pumped or gravity DHW pumped central heating system. The Classic SE wall hung cast iron boiler offers unprecedented standards of reliability and its robust design facilitates quick and easy installation and servicing. The range is available in variable outputs, making it suitable for most house types.

## The Mexico heat-only floor-standing range

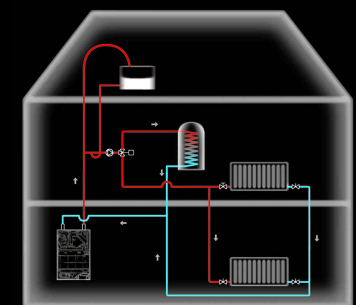
Like the Classic SE, this floor standing cast iron boiler is suitable for installation on a fully pumped or gravity DHW pumped central heating system. Our market-leading Mexico boiler is proven to be the ideal replacement floor-standing boiler as it is easy to install, service and operate.

**Note:** For heat-only and system boilers, where a mid-position valve is used, a bypass is not necessary as one circuit will always be open. Where the system is designed so that both circuits can be closed simultaneously, then a bypass must be fitted, comprising at least 3 metres of 22mm copper tube, including a lockshield or automatic bypass valve set to achieve a maximum of 11°C T.

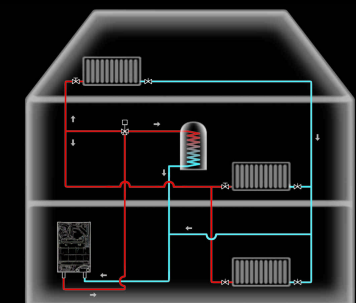
## Product solutions for every system



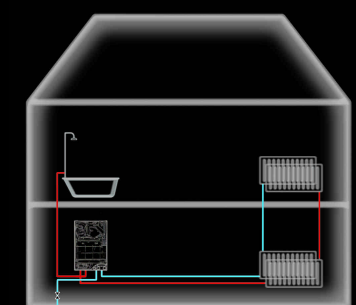
Gravity Hot Water Pumped Central Heating



Fully Pumped Systems



Fully Pumped Sealed System



Combination Boiler System



# Ideal mini C and mini S

Both the mini C and mini S boilers boast a modern, stylish exterior that will look pleasing to the eye in any home environment. Inside, however, the mini is a simple yet robust example of highly reliable engineering that will offer years of trouble-free service. Its ease of installation, flexible fluing and siting options and use of common parts all ensure that both the mini C and mini S are amongst the most installer-friendly boilers available.

#### Application and usage

Not only does the mini C offer excellent reliability for both installers and homeowners alike, it is also extremely easy to install thanks to a stand-off kit, flexible fluing lengths, pre-piping frame and, of course, the size of the appliance itself. Its siting flexibility is also further enhanced by its twin-pipe fluing, which makes it ideal for applications where there is little room available.

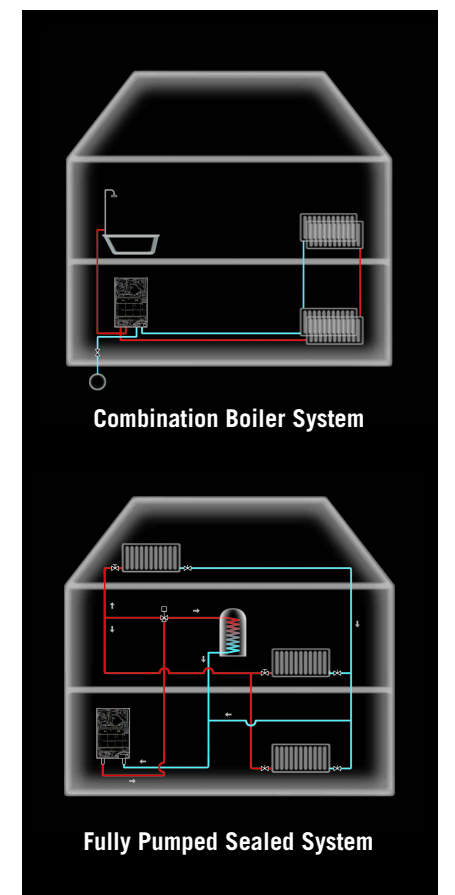
The mini S shares all these benefits but can be fitted in conjunction with a fully pumped sealed system and stored DHW system.

#### The mini C in operation

The mini C's heating and hot water provision is automatically controlled, the boiler is fan-flued and no ventilation is required. To improve efficiency, the boiler modulates its heat output to meet the heating load being applied. It also incorporates a variable thermostat for CH temperature control, this being adjustable from 38°C to 85°C. Maximum DHW outputs range from 24.3kW to 32kW (83,000-109,200Btu/h) delivering maximum flows from 10 to 13.1 l/min at 35°C temperature rise, according to model. A stable DHW temperature is maintained regardless of flow rate.

#### The mini S in operation

The mini S is an automatically controlled, fan-flued boiler. It can modulate its heat output to suit the demands of the heating load being placed upon it and incorporates a variable thermostat for CH temperature control, adjustable from 38°C to 85°C.



SEDBUK rating



# mini C-technical data

## PERFORMANCE DATA

| Model     |     |       | mini C24        | mini C28        | mini C32         |
|-----------|-----|-------|-----------------|-----------------|------------------|
| Output    | DHW | kW    | 9.1 - 24.3      | 11.0 - 28.4     | 12.7 - 32.0      |
|           |     | Btu/h | 31,000 - 83,000 | 37,500 - 96,800 | 43,400 - 109,200 |
| Flow Rate | CH  | l/min | 10.0            | 11.6            | 13.1             |
|           |     | kW    | 9.1 - 24.3      | 11.0 - 28.4     | 12.7 - 32.0      |
|           |     | Btu/h | 31,000 - 83,000 | 37,500 - 96,800 | 43,400 - 109,200 |

## INSTALLATION DATA

| Model                   |        | mini C24        | mini C28 | mini C32 |
|-------------------------|--------|-----------------|----------|----------|
| Gas supply connection   | mm     | 22              |          |          |
| CH flow connection      | mm     | 22 compression* |          |          |
| CH return connection    | mm     | 22 compression* |          |          |
| Expansion vessel volume | litres | 6               | 6        | 7        |
| Pressure relief valve   | mm     | 15              |          |          |
| DHW inlet connection    | mm     | 15 compression  |          |          |
| DHW outlet connection   | mm     | 15 compression  |          |          |
| Power consumption       | w      | 150             | 170      | 180      |
| Electrical supply       | V/Hz   | 230/50          |          |          |
| Fuse rating             | A      | 3               |          |          |
| Water content           | litres | 1               | 1.1      | 1.1      |
| Maximum lift weight     | kg     | 35.5            | 36.5     | 36.5     |
| Total packed weight     | kg     | 40              | 41       | 42       |
| Flue terminal diameter  | mm     | 100             |          |          |

\*For outputs exceeding 18kW (60,000Btu/h), 28mm primary pipework will be required.

## CLEARANCE DATA

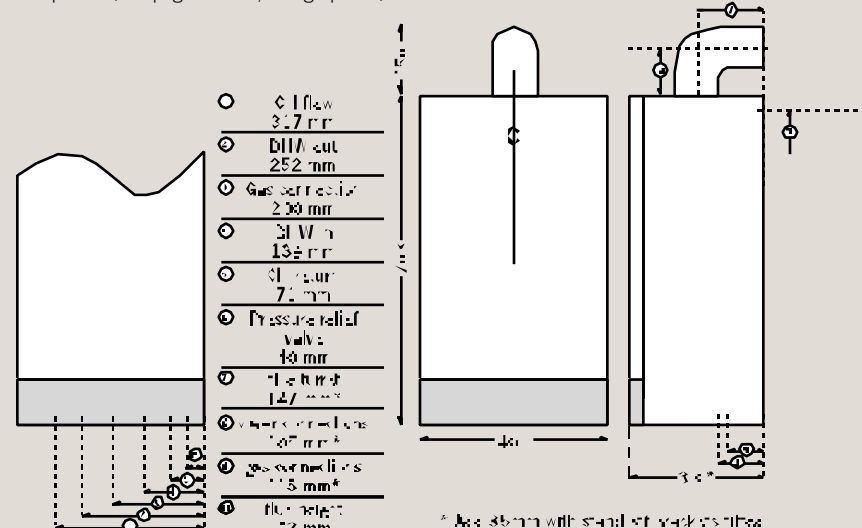
The following clearances are required for installation, servicing and replacement of parts.

| Front of boiler | Left-hand side of boiler | Right-hand side of boiler | Top of boiler | Bottom of boiler |
|-----------------|--------------------------|---------------------------|---------------|------------------|
| 450mm           | 25mm                     | 50mm                      | 200mm         | 200mm*           |

\*Minimum clearance required at bottom of boiler for servicing is 200mm, additional clearance will be required for installation, depending upon site conditions.

## PIPEWORK CONNECTIONS AND PRODUCT DIMENSIONS

Flue plumbing is a by-product of efficiency. Please be aware of terminal positions to avoid complaints (see pages 10-14, fluing options).



## The Ideal mini combination boiler

### Installation tips

Ideal recommend that a minimum heating load of 10% of minimum heating output be controlled using a room thermostat, leaving all other rooms capable of being controlled by TRVs.

These boilers require a permanent live electrical supply.

A DHW flow restrictor is incorporated within the boiler, automatically controlling the DHW flow. This eliminates the requirement for any installer adjustments.

### Siting options

Compact dimensions and a highly flexible fluing system allow the mini C to be easily sited.

**Note:** This product is not suitable for external installation. The wall on which the boiler is being mounted must be able to support its total weight. The wall will not require special protection, but if the unit is being fitted in a timber-frame building the guidelines set out in BS 5440: Part 1:1990 should be observed.

## SEDBUK rating



# mini S-technical data

## PERFORMANCE DATA

| Model  |       | mini S24        | mini S28        |
|--------|-------|-----------------|-----------------|
| Output | kW    | 9.1 - 24.3      | 11.0 - 28.4     |
|        | Btu/h | 31,000 - 83,000 | 37,500 - 96,800 |

## INSTALLATION DATA

| Model                   |        | mini S24        | mini S28 |
|-------------------------|--------|-----------------|----------|
| Gas supply connection   | mm     | 22              |          |
| CH flow connection      | mm     | 22 compression* |          |
| CH return connection    | mm     | 22 compression* |          |
| Expansion vessel volume | litres | 6               |          |
| Pressure relief valve   | mm     | 15              |          |
| Power consumption       | w      | 150             | 170      |
| Electrical supply       | V/Hz   | 230/50          |          |
| Fuse rating             | A      | 3               |          |
| Water content           | litres | 1               | 1.1      |
| Maximum lift weight     | kg     | 35              | 36       |
| Total packed weight     | kg     | 39              | 40       |
| Flue terminal diameter  | mm     | 100             |          |

\*For outputs exceeding 18kW (60,000Btu/h), 28mm primary pipework will be required.

## CLEARANCE DATA

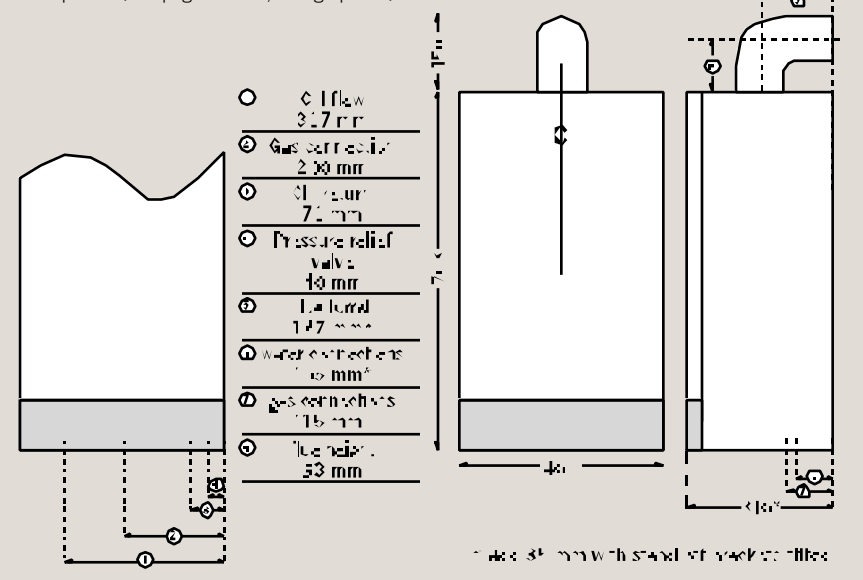
The following clearances are required for installation, servicing and replacement of parts.

| Front of boiler | Left-hand side of boiler | Right-hand side of boiler | Top of boiler | Bottom of boiler |
|-----------------|--------------------------|---------------------------|---------------|------------------|
| 450mm           | 25mm                     | 50mm                      | 200mm         | 200mm*           |

\*Minimum clearance required at bottom of boiler for servicing is 200mm, additional clearance will be required for installation, depending upon site conditions.

## PIPEWORK CONNECTIONS AND PRODUCT DIMENSIONS

Flue plumbing is a by-product of efficiency. Please be aware of terminal positions to avoid complaints (see pages 10-14, fluing options).



For full technical details please refer to the Installation and Servicing Instructions provided with the product.

## The Ideal mini system boiler

### Installation tips

Ideal recommend that a minimum heating load of 10% of minimum heating output be controlled using a room thermostat, leaving all other rooms capable of being controlled by TRVs.

### Siting options

Compact dimensions and a highly flexible fluing system allow the mini S to be easily sited.

**Note:** This product is not suitable for external installation. The wall on which the boiler is being mounted must be able to support its total weight. The wall will not require special protection, but if the unit is being fitted in a timber-frame building the guidelines set out in BS 5440: Part 1:1990 should be observed.

## SEDBUK rating



# Ideal mini fluing

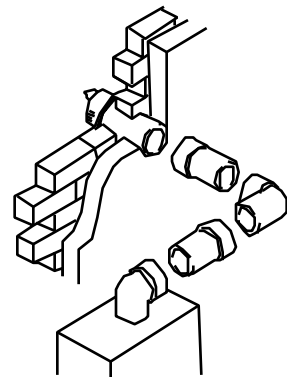
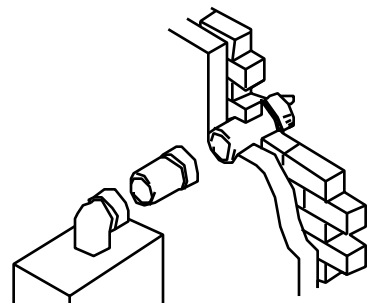
Please note the following fluing options are relevant to all the mini boilers previously mentioned in this brochure.

## Horizontal concentric - 100mm diameter.

For concentric flue lengths above 1 metre the flue restrictor ring must be removed or changed dependent on length. The horizontal flue system must have a fall of 3% away from the boiler.

## Vertical concentric - 125mm diameter.

Dependent on vertical flue lengths the flue restrictor ring must be removed or changed.



## HORIZONTAL FLUE

| Flue   | Part Number                                 | Maximum straight flue length (mm)                                  |
|--|---|--|
| Standard pack B  | 159909                                      | Right }<br>Left } 750<br>Rear }                                    |
| Standard pack B<br>+ Extension pack D  | 159909<br>158417                            | Right }<br>Left } 1725<br>Rear }                                   |
| Standard pack B<br>+ 4 x Extension pack D<br>(+ 2 x Extension pack D - 32kW) | 159909<br>4 x 158417<br>(2 x 158417 - 32kW) | Right } 4000 (24 kW)<br>Left } 4000 (28 kW)<br>Rear } 2700 (32 kW) |

**Note:** Lengths are from centre line of boiler outlet to outside wall face.  
Where extension D packs are cut to length, flared end connector must be retained.

## HORIZONTAL FLUE WITH 1 x 90° ELBOW

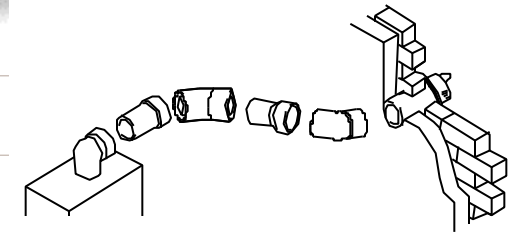
| Flue   | Part Number                                 | Maximum straight flue length (mm)                                  |
|--|---|--|
| Standard pack B<br>+ 90° Elbow   | 159909<br>158418                            | Right }<br>Left } 930<br>Rear }                                    |
| Standard pack B<br>+ 3 x Extension pack D<br>(+ 1 x Extension pack D - 32kW) | 159909<br>3 x 158417<br>(1 x 158417 - 32kW) | Right } 3000 (24 kW)<br>Left } 3000 (28 kW)<br>Rear } 1700 (32 kW) |

**Note:** Lengths are sum of all straight lengths between centre lines/outside wall.  
Where extension D packs are cut to length, flared end connector must be retained.

## HORIZONTAL FLUE WITH 2 x 45° ELBOW

| Flue   | Part Number                                 | Maximum straight flue length (mm)                                  |
|--|---|--|
| Standard pack B<br>+ 2 x 45° Elbow   | 159909<br>2 x 158419                        | Right }<br>Left } 990<br>Rear }                                    |
| Standard pack B<br>+ 3 x Extension pack D<br>(+ 1 x Extension pack D - 32kW) | 159909<br>3 x 158417<br>(1 x 158417 - 32kW) | Right } 3000 (24 kW)<br>Left } 3000 (28 kW)<br>Rear } 1700 (32 kW) |

**Note:** Lengths are sum of all straight lengths between centre lines/outside wall.  
Where extension D packs are cut to length, flared end connector must be retained.



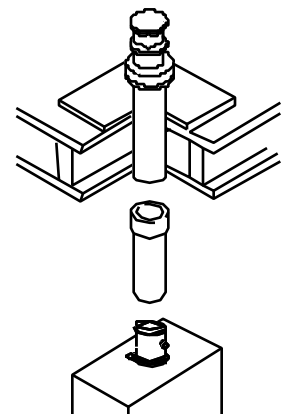
## Vertical concentric – 125 mm diameter

Our maximum flue length is 8.5 metres vertical (6 metres for the 32kW). Deduct 1 metre for each 90° bend and 0.5 metre for each 45° bend. Please note: For flue lengths above 1 metre the flue restrictor ring must be removed. For flue lengths above 3 metres a condensate drain and trap must be fitted. The trap must be connected to a suitable waste pipe.

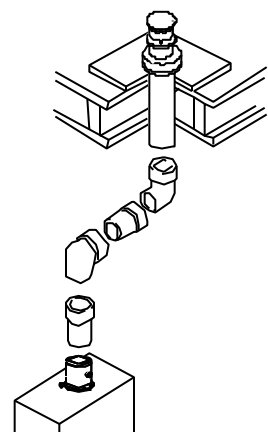
## ROOF FLUE SYSTEM

| Flue  | Part Number   | Maximum straight flue length (mm)                                  |
|---|---|--|
| Roof flue kit<br>+ Weather collar   | 158421<br>158431 / 158432*                                  | Right }<br>Left } 1360<br>Rear }                                   |
| Roof flue kit<br>+ Extension Pack, 125mm diameter<br>+ Weather collar   | 158421<br>158422<br>158431 / 158432*                        | Right }<br>Left } 2335<br>Rear }                                   |
| Roof flue kit<br>+ 8 (maximum) x Extension Packs<br>125mm diameter<br>+ Weather collar<br>(+ 5 x Extension pack D - 32kW) | 158421<br>158422<br>158431 / 158432*<br>(5 x 158417 - 32kW) | Right } 8500 (24 kW)<br>Left } 8500 (28 kW)<br>Rear } 6000 (32 kW) |

**Note:** 158431: universal weather collar (suits any roof pitch).  
\*158432: flat roof weather collar.



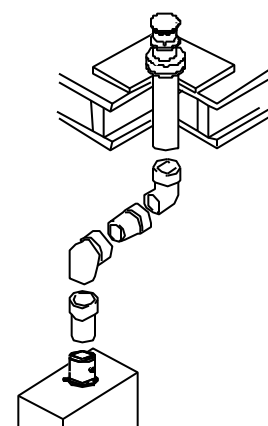
# Ideal mini fluing



## ROOF FLUE SYSTEM WITH 2 x 45° ELBOW

| Flue   | Part Number         | Maximum straight flue length (mm) |
|--|---------------------|-----------------------------------|
| Roof flue kit                                | 158421              | 7500 (24kW)                       |
| + 7 (max.) x Extension packs, 125mm diameter | 158422              |                                   |
| + 2 x 45° Elbow, 125mm diameter              | 2 x 158424          | 7500 (28kW)                       |
| + Weather collar                             | 158431 / 158432*    | 5000 (32kW)                       |
| (+ 4 x Extension pack D - 32kW)              | (4 x 158422 - 32kW) |                                   |

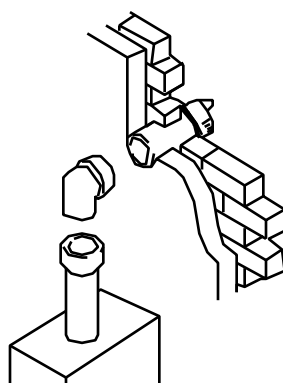
**Note:** 158431: universal weather collar (suits any roof pitch).  
 \*158432: flat roof weather collar.  
 When fitting the 125mm diameter vertical flue kits where the maximum straight flue length exceeds 3 metres a condensate drain and trap are required. The trap must be connected to a suitable waste pipe.



## ROOF FLUE SYSTEM WITH 2 x 90° ELBOW

| Flue   | Part Number         | Maximum straight flue length (mm) |
|--|---------------------|-----------------------------------|
| Roof flue kit                                | 158421              | 6500 (24kW)                       |
| + 6 (max.) x Extension packs, 125mm diameter | 158422              |                                   |
| + 2 x 90° Elbow, 125mm diameter              | 2 x 158424          | 6500 (28kW)                       |
| + Weather collar                             | 158431 / 158432*    | 4000 (32kW)                       |
| (+ 3 x Extension pack D - 32kW)              | (3 x 158422 - 32kW) |                                   |

**Note:** 158431: universal weather collar (suits any roof pitch).  
 \*158432: flat roof weather collar.  
 When fitting the 125mm diameter vertical flue kits where the maximum straight flue length exceeds 3 metres a condensate drain and trap are required. The trap must be connected to a suitable waste pipe.



## VERTICAL EXTENSION

Permits horizontal flue section to be raised by 1.09 metres.

| Flue                          | Part Number | Maximum straight flue length (mm) |
|-------------------------------|-------------|-----------------------------------|
| Standard pack B               | 159909      | 4000 (24kW)                       |
| + Vertical outlet kit         | 159917      | 4000 (28kW)                       |
| + Appropriate Extension packs | 158417      | 2700 (32kW)                       |

**Note:** Maximum flue length is combined horizontal and vertical.

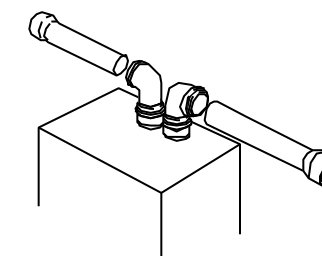
## Twin-pipe - 80mm diameter

Our maximum combined flue length is 16 metres. Deduct 1.65 metres for each 90° bend and 0.9 metres for each 45° bend. If a 90° F & F elbow used deduct 2.75 metres. For flue lengths above 4 metres a condensate drain and trap must be fitted. The trap must be connected to a suitable waste pipe.

**Note:** The flue system must have a fall of 0.5% away from the boiler.

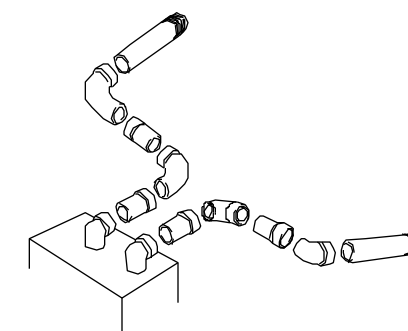
## HORIZONTAL TWIN-PIPE

| Flue                                | Part Number | Maximum straight flue length (mm) |
|-------------------------------------|-------------|-----------------------------------|
| 'Twin-pipe' flue kit, 80mm diameter | 158425      | 16000 combined                    |
| + 'Twin-pipe' flue extension pipes  | 158426      |                                   |



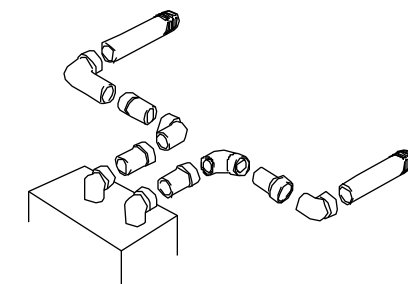
## HORIZONTAL TWIN-PIPE WITH 4 x 45° ELBOW

| Flue                                | Part Number | Maximum straight flue length (mm) |
|-------------------------------------|-------------|-----------------------------------|
| 'Twin-pipe' flue kit, 80mm diameter | 158425      | 14000 combined                    |
| + 'Twin-pipe' flue extension pipes  | 158426      |                                   |
| + 4 x 45° Elbow M & F               | 4 x 158429  |                                   |



## HORIZONTAL TWIN-PIPE WITH 4 x 90° ELBOW

| Flue                                | Part Number | Maximum straight flue length (mm) |
|-------------------------------------|-------------|-----------------------------------|
| 'Twin-pipe' flue kit, 80mm diameter | 158425      | 12000 combined                    |
| + 'Twin-pipe' flue extension pipes  | 158426      |                                   |
| + 4 x 90° Elbow M & F               | 4 x 158427  |                                   |



**Note:** Minimum distance between air and flue terminals is 120mm.

# Ideal mini fluing options

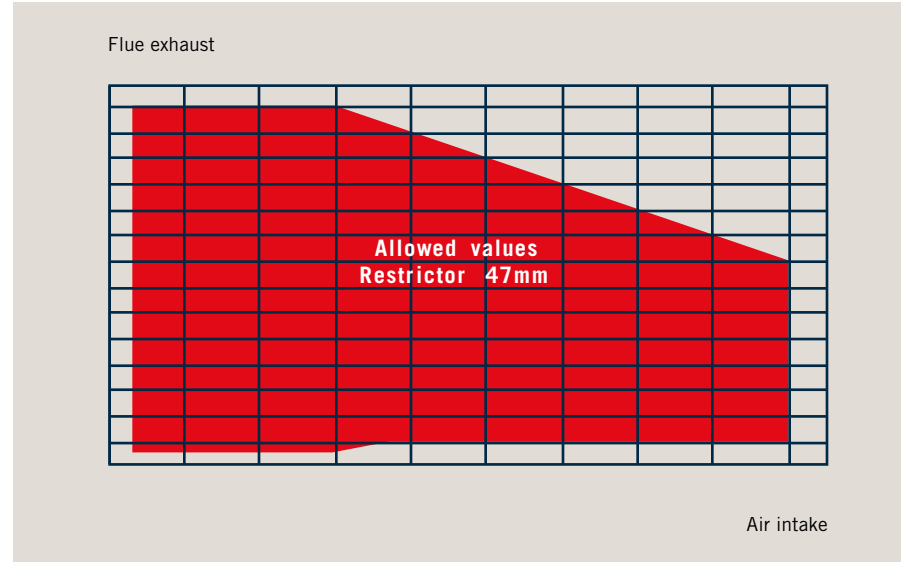
The previously shown mini range will benefit from a wide variety of fluing options, making it possible for the installer to fit each unit safely and unobtrusively in almost any situation. The following information sets out the alternatives that are available and demonstrates the siting flexibility that is an inherent part of all our boilers. The Ideal mini range comes with a choice of concentric or twin-pipe fluing options.

**Twin-pipe - 80mm diameter**  
Various twin-pipe options are available to assist in the termination of the flue where the boiler is installed in a location remote to an outside wall. These options allow for separation of the air supply from the pipe that discharges the flue gases. The maximum combined flue length is 16 metres, the following graphs demonstrate the allowable lengths for the air supply and flue gas pipes.

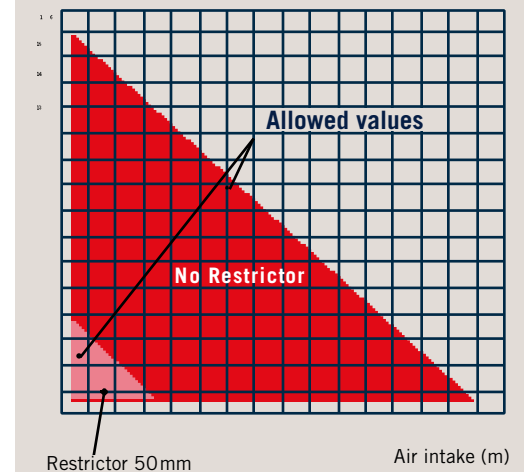
**Maximum flue lengths**

|              |             |      |           |      |
|--------------|-------------|------|-----------|------|
| mini C24 S24 | HORIZONTAL* | 4m   | VERTICAL* | 8.5m |
| mini C28 S28 |             | 4m   |           | 8.5m |
| mini C32     |             | 2.7m |           | 6m   |

**ALLOWABLE LENGTHS FOR THE AIR SUPPLY AND FLUE GAS PIPES**  
mini C24, C28, S24 and S28



Refer to the following diagram for the model mini C32  
Flue exhaust (m)



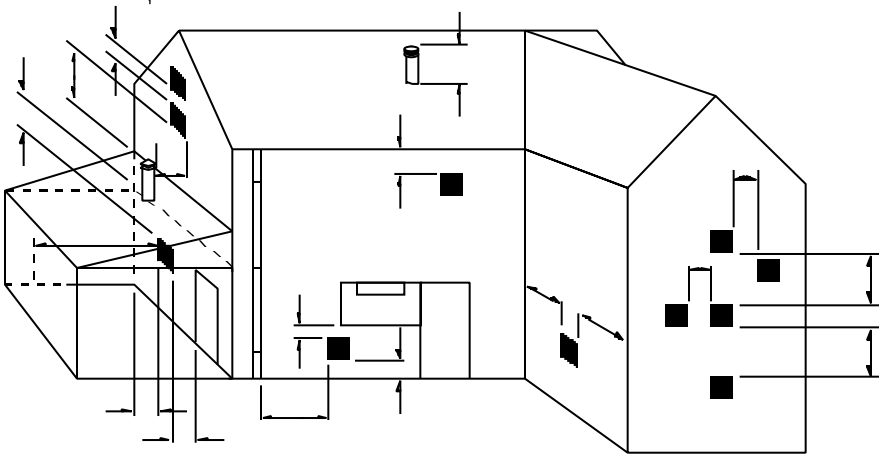
**ALLOWABLE LENGTHS FOR THE AIR SUPPLY AND FLUE GAS PIPES**  
mini C32 only

\*Each 90° M & F elbow used is at the expense of 1650mm of straight flue run. Each 90° F & F elbow used is at the expense of 2750mm of straight flue run and each 45° M & F elbow is used at the expense of 900mm of straight flue run.

# siting flexibility

**Siting flexibility**  
There are a substantial number of fluing options available with our boilers, each giving excellent siting flexibility for almost all applications. These options include components such as roof flue and powered vertical flue kits which ensure that the installer encounters minimum restrictions.

**Solutions for all applications**  
The Ideal mini range of fluing components has been planned to provide the installer with a choice of options which is capable of covering every application.



**Minimum dimensions of flue terminal positions**

**KEY TO ILLUSTRATION**

| Terminal position  | Fan models Min.spacing |
|--|------------------------|
| 1 Directly below, above or along side of an openable window, air vent or other ventilation opening | 300mm                  |
| 2 Below gutters, drain pipes or soil pipes   | 75mm**                 |
| 3 Below eaves  | 200mm**                |
| 4 Below balconies or car port roof   | 300mm**                |
| 5 From vertical drain pipes or soil pipes  | 60mm**                 |
| 6 From an internal or external corner or to a boundary along side the terminal                     | 150mm**                |
| 7 Above adjacent ground, roof or balcony level   | 300mm                  |
| 8 From a surface or a boundary facing a terminal   | 600mm                  |
| 9 From a terminal facing a terminal  | 1200mm                 |
| 10 From an opening in a car port into a dwelling   | 1200mm                 |
| 11 Vertically from a terminal on the same wall   | 1500mm                 |
| 12 Horizontally from a terminal on the same wall   | 300mm                  |
| <b>Vertical flue</b>   |                        |
| 13 Above a pitched or flat roof  | 300mm                  |
| 14 From adjacent wall to flue  | 300mm                  |
| <b>Twin Flue Appliances</b>  |                        |
| 15 Centre distance between air inlet and flue outlet ducts   | 120mm                  |

*Note: not shown on diagram*

**FLUE COMPONENTS**

|  | Part No. |
|--|----------|
| 'B Pack' Standard flue 100mm diameter                | 159909   |
| 'D Pack' Flue extension, 100mm diameter, 975mm long  | 158417   |
| 90° Elbow Kit, 100mm diameter                        | 158418   |
| 45° Elbow Kit, 100mm diameter                        | 158419   |
| Vertical outlet kit                                  | 159917   |
| Roof flue kit 125mm diameter                         | 158421   |
| Vertical flue extension, 125mm diameter, 1000mm long | 158422   |
| 90° Elbow kit, 125mm diameter                        | 158423   |
| 45° Elbow kit, 125mm diameter                        | 158424   |
| 'Twin-pipe' flue kit, 80mm diameter                  | 158425   |
| 'Twin-pipe' flue extension, 80mm diameter            | 158426   |
| 90° Elbow Kit, 80mm diameter, M&F                    | 158427   |
| 90° Elbow Kit, 80mm diameter, double F&F             | 158428   |
| 45° Elbow Kit, 80mm diameter, M&F                    | 158429   |
| Condensate drain - 80mm diameter pipe                | 158430   |
| Condensate drain - 12mm diameter pipe                | 158307   |
| Weather collar - universal                           | 158431   |
| Weather collar - flat roof                           | 158432   |
| Condensate trap - 80mm                               | 158437   |

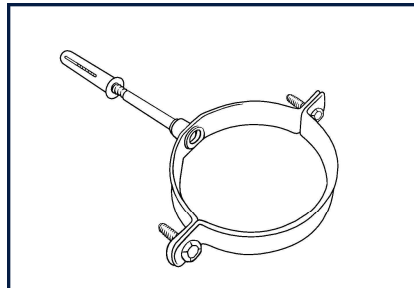
Table corresponds to BS5440: Part 1 : 2000 except where marked\*  
\*\*If a reduction down to 25mm is required please ring the technical helpline for advice on purchasing a Flue Kit with reduced terminal clearance capability



# Ideal mini extras and accessories

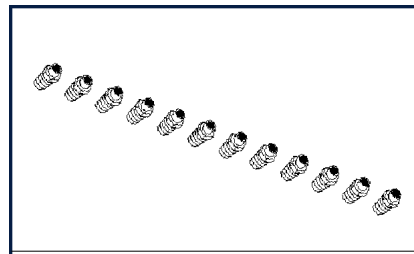
There are many extras and accessories available for use with all the Ideal appliances. All are competitively priced and readily available.

## Duct support brackets



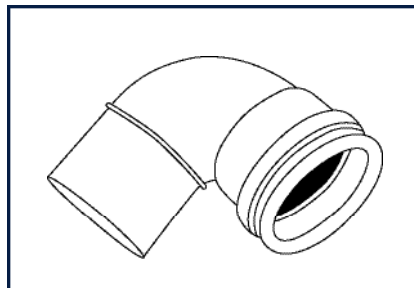
Ideal Part No. 159238 80mm  
Ideal Part No. 159239 100mm  
Ideal Part No. 159240 125mm

## LPG and NG conversion kits



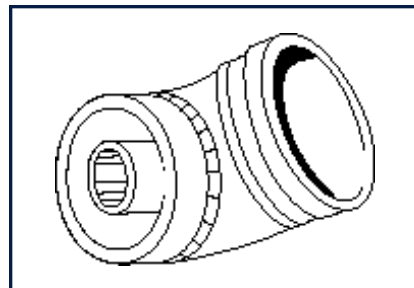
Comprise of burner nozzles.  
NGto LPG conversion kit Ideal Part No. 158435  
LPG to NG conversion kit Ideal Part No. 158436  
C32 only: NG to LPG - 200715  
LPGtoNG - 200716

## Twin-pipe 90° Elbow Kit M & F



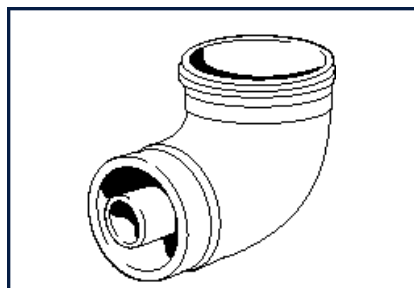
Painted white. 80mm diameter.  
Ideal Part No. 158427

## 45° Elbow Kit



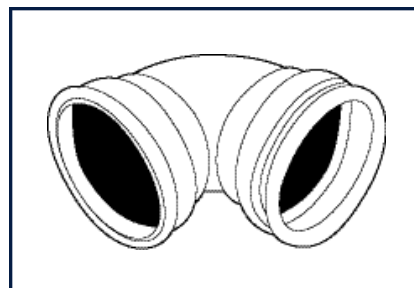
Painted white.  
60/100 mm diameter Ideal Part No. 158419  
80/125mm diameter Ideal Part No. 158424

## 90° Elbow Kit



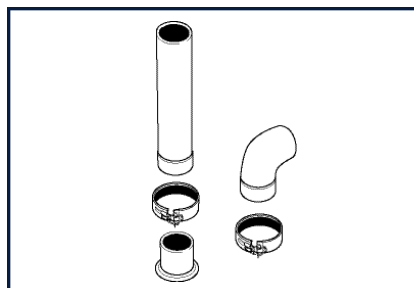
Painted white.  
60/100mm diameter Ideal Part No. 158418  
80/125mm diameter Ideal Part No. 158423

## 90° Elbow Kit 80mm diameter F & F



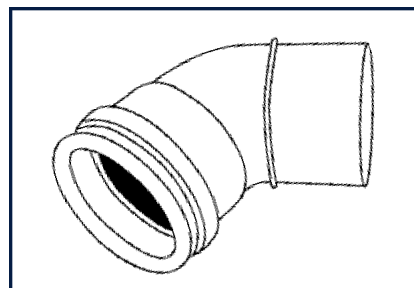
Painted white. 80mm diameter.  
Ideal Part No. 158428

## Vertical outlet kit



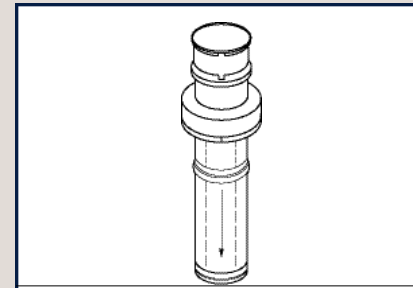
Comprises extension flue duct and elbow.  
Ideal Part No. 159917

## Twin-pipe 45° Elbow Kit M & F



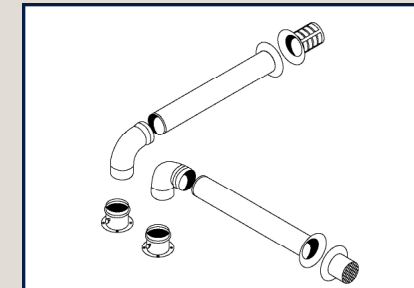
Painted white. 80mm diameter.  
Ideal Part No. 158429

## Roof flue kit



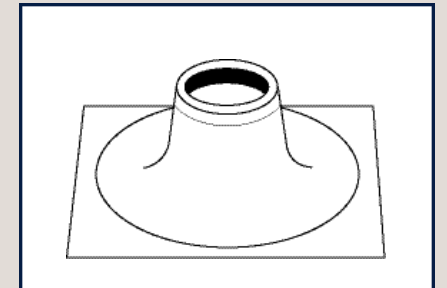
80/125 mm diameter, comprises vertical connector and roof flue terminal.  
Ideal Part No. 158421

## Twin-pipe flue kit



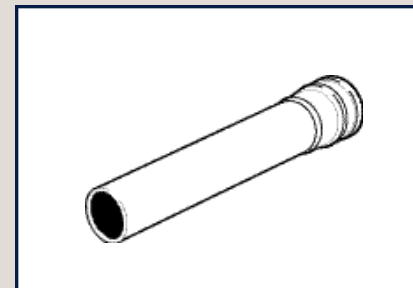
80mm diameter.  
Ideal Part No. 158425

## Weather collar – flat roof



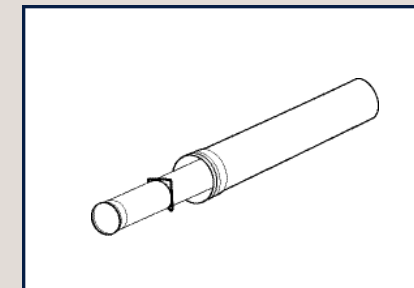
Ideal Part No. 158432

## Twin-pipe flue extension



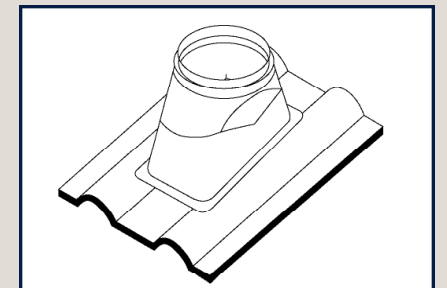
Cutttable 80mm diameter, x 960 mm.  
Ideal Part No. 158426

## Vertical flue extension



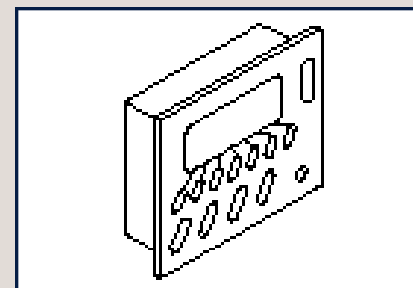
Cutttable, 80/125 mm diameter x 1000 mm long.  
Ideal Part No. 158422

## Weather collar – universal



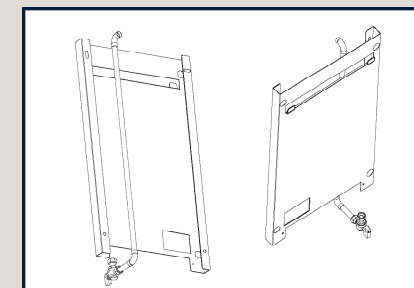
Ideal Part No. 158431

## Electronic timer



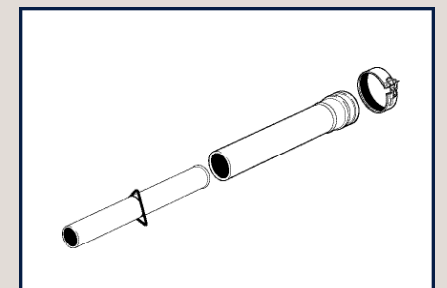
7 day kit, Ideal Part No. 158306  
24 hour kit, Ideal Part No. 200862

## Stand-off kit



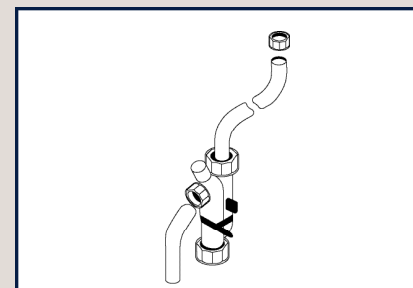
Comprises stand-off channel and fixings.  
Ideal Part No. 158433

## Flue pack D



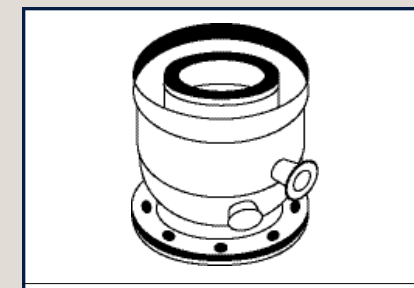
Cutttable, 60/100 mm diameter x 975 mm long.  
Ideal Part No. 158417

## Condensate trap



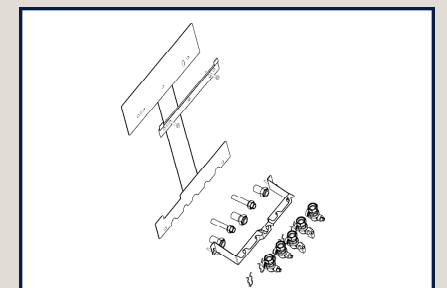
Ideal Part No. 158437

## Condensate drain



Vertical 125 mm diameter and twin pipe 80 mm diameter kits available.  
80mm diameter Ideal Part No. 158430  
125 mm diameter Ideal Part No. 158307

## Pre-piping frame



Comprises pre-piping frame, isolating valves.  
Ideal Part No. 158434

# Classic SE



NB: UPWARD OR DOWNWARD PIPING OPTIONS ARE AVAILABLE

## The Classic SE heat-only wall-hung boiler

The Classic SE is a tried and tested boiler that offers unprecedented standards of reliability due to its simple design and engineering. This has resulted in appliances that are easily installed and that require minimum servicing and maintenance. The Classic SE offers FF fluing options and is unique in the fact that it is the only wall-hung cast iron boiler with an RS product offering. It is also worth noting that propane gas versions are also available, in certain FF output models.

The Classic SE is now also available with a silver effect casing to blend with the most contemporary homes.

## Application and usage

The Classic SE has been developed to be the best boiler for fully pumped and gravity systems, either for new homes or for replacement and upgrade systems. Its attractive, compact design along with flexible fluing options and ultra-quiet running also means that it can be sited anywhere in the house, even in a bedroom.

## The Classic SE in operation

The Classic SE incorporates a variable thermostat for central heating control which is adjustable from 56°C to 82°C. The Classic SE range has outputs from 8.8 - 29.3kW (30,000 - 100,000Btu/h), making it suitable for the majority of house types.

## Classic SE FF

Designed for fully pumped systems.

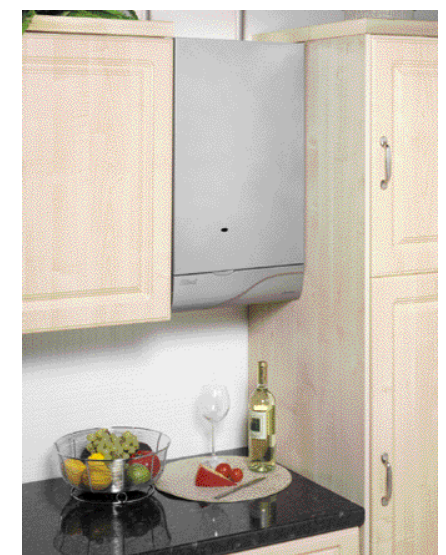
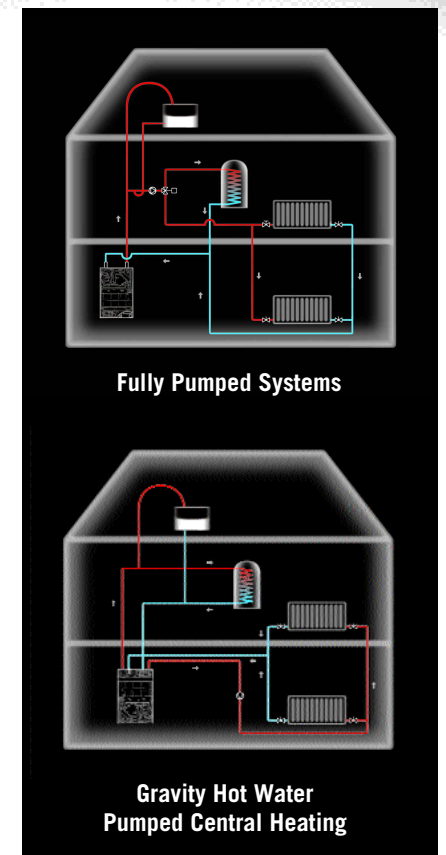
## Classic SE RS

The room sealed Classic SE RS is suitable for both fully pumped and combined gravity DHW and pumped heating systems.

## Classic Slimline SE

The Classic SE is available as a slimline model designed to meet specific developer needs. The Classic Slimline SE fits inside a standard 500mm wide X 720mm high cupboard. Its dimensions are H: 700 W: 380 D: 280. The Classic Slimline SE shares all of the features and benefits of the Classic SE however fluing options are restricted to 1m horizontal.

The Classic Slimline SE is available in 4 models, 9 FF, 12 FF, 15 FF and 18 FF.



Classic SE - silver option

## SEDBUK rating



# Classic SE FF-technical data

## PERFORMANCE DATA

| Model     | 9 FF   | 12 FF  | 15 FF  | 18 FF  | 21 FF  | 24 FF  | 30 FF   | 15P FF | 18P FF | 24P FF |
|-----------|--------|--------|--------|--------|--------|--------|---------|--------|--------|--------|
| Output kW | 8.8    | 11.7   | 14.7   | 17.6   | 20.5   | 23.4   | 29.3    | 14.7   | 17.6   | 23.4   |
| Btu/h     | 30,000 | 40,000 | 50,000 | 60,000 | 70,000 | 80,000 | 100,000 | 50,000 | 60,000 | 80,000 |

**Note:** 'P' as in 15P FF denotes propane gas model. All other models natural gas.

## INSTALLATION DATA

| Model                 | 9 FF   | 12 FF | 15 FF | 18 FF | 21 FF | 24 FF | 30 FF | 15P FF | 18P FF | 24P FF |      |
|-----------------------|--|-------|-------|-------|-------|-------|-------|--------|--------|--------|------|
| Gas supply connection | Rc 1/2" 1/2" (BSP female)                                    |       |       |       |       |       |       |        |        |        |      |
| Flow connection       | 22mm copper (except 21 FF, 24 FF, 30 FF, 24P FF 28mm copper) |       |       |       |       |       |       |        |        |        |      |
| Return connection     | 22mm copper (except 21 FF, 24 FF, 30 FF, 24P FF 28mm copper) |       |       |       |       |       |       |        |        |        |      |
| Electrical supply     | 230V – 50Hz (boiler power consumption 100W)                  |       |       |       |       |       |       |        |        |        |      |
| Fuse rating           | External 3A Internal F1A to BS 4265                          |       |       |       |       |       |       |        |        |        |      |
| Water content         | FF   | L     | 2.7   | 2.7   | 3.6   | 3.6   | 4.6   | 4.6    | 3.6    | 3.6    | 4.6  |
| Max. install. weight  | FF   | kg    | 31.4  | 31.4  | 37.4  | 37.4  | 43.1  | 43.1   | 37.4   | 37.4   | 43.1 |
| Flue duct diameter    | FF   | mm    | 100   | 100   | 100   | 100   | 100   | 100    | 100    | 100    | 100  |

## CLEARANCE DATA

The following clearances are required for installation, servicing and replacement of parts.

| Front of boiler | Sides | Top of boiler | Bottom of boiler |
|-----------------|-------|---------------|------------------|
| 533mm           | 5mm   | 100mm         | 100mm            |

**Note:** This product is not suitable for external installation. The wall on which the boiler is being mounted must be able to support its total weight. The wall will not require special protection, but if the unit is being fitted in a timber-frame building the guidelines set out in BS 5440: Part 1:1990 should be observed.

## The Ideal wall hung cast iron, fan-flued boiler

### Installation tips

Ideal recommend that a minimum heating load of 10% of heating output be controlled using a room thermostat, leaving all other rooms capable of being controlled by TRVs.

### Siting options

Compact dimensions, flexible siting and engineered for low turbulence and quiet running.

# Classic SE RS-technical data

## PERFORMANCE DATA

| Model     |       | 9 RS   | 12 RS  | 15 RS  | 18 RS  |
|-----------|-------|--------|--------|--------|--------|
| Output kW |       | 8.8    | 11.7   | 14.7   | 17.6   |
|           | btu/h | 30,000 | 40,000 | 50,000 | 60,000 |

## INSTALLATION DATA

| Model                    |    | 9 RS                                       | 12 RS | 15 RS | 18 RS |      |
|--------------------------|----|--|-------|-------|-------|------|
| Gas supply connection    |    | Rc 1/2" 1/2" (BSP female)                  |       |       |       |      |
| Flow connection          |    | 22mm copper                                |       |       |       |      |
| Return connection        |    | 22mm copper                                |       |       |       |      |
| Electrical supply        |    | 230V – 50Hz (boiler power consumption 50W) |       |       |       |      |
| Fuse rating              |    | External 3A Internal F1A to BS 4265        |       |       |       |      |
| Water content            | RS | L  | 3.6   | 3.6   | 4.6   | 4.6  |
| Max. installation weight | RS | kg   | 34.7  | 34.7  | 42.7  | 42.7 |

## CLEARANCE DATA

The following clearances are required for installation, servicing and replacement of parts.

| Front of boiler | Sides | Top of boiler | Bottom of boiler |
|-----------------|-------|---------------|------------------|
| 533mm           | 5mm   | 100mm         | 100mm            |

**Note:** This product is not suitable for external installation. The wall on which the boiler is being mounted must be able to support its total weight. The wall will not require special protection, but if the unit is being fitted in a timber-frame building the guidelines set out in BS 5440: Part 1:1990 should be observed.

## The Ideal wall hung cast iron, room sealed boiler

### Installation tips

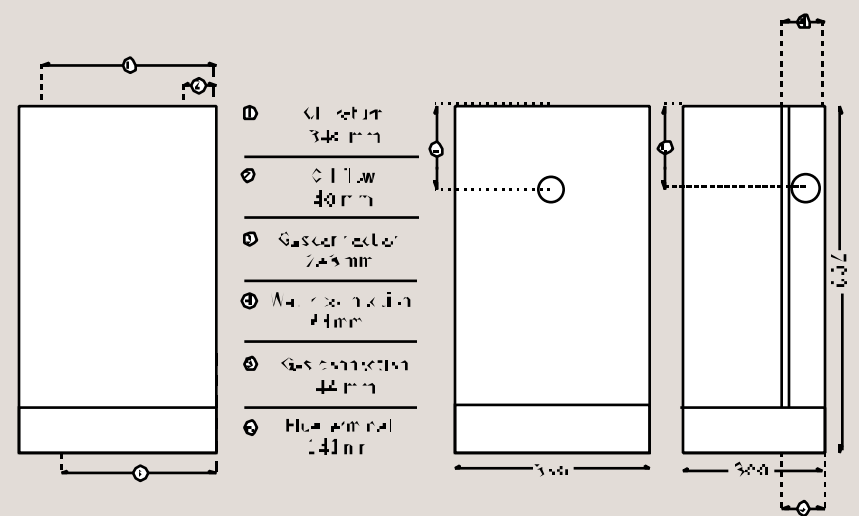
Ideal recommend that a minimum heating load of 10% of heating output be controlled using a room thermostat, leaving all other rooms capable of being controlled by TRVs.

### Siting options

This room sealed appliance can be installed where external wall siting is required and benefits from compact dimensions.

## PIPEWORK CONNECTIONS AND PRODUCT DIMENSIONS

Flue plumbing is a by-product of efficiency. Please be aware of terminal positions to avoid complaints (see pages 22-25, fluing options).



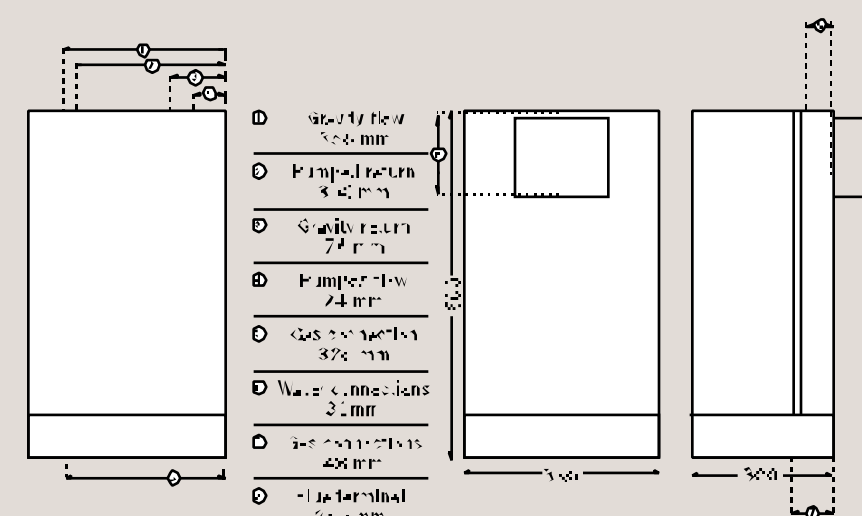
SEDBUK rating

**D**

For full technical details please refer to the Installation and Servicing Instructions provided with the product.

## PIPEWORK CONNECTIONS AND PRODUCT DIMENSIONS

Flue plumbing is a by-product of efficiency. Please be aware of terminal positions to avoid complaints (see page 22-25, fluing options).



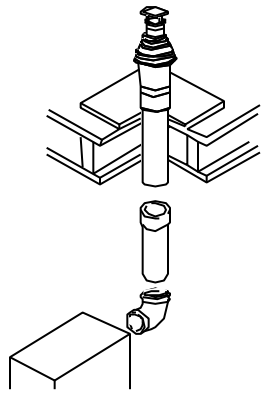
SEDBUK rating

**D**

For full technical details please refer to the Installation and Servicing Instructions provided with the product.



# Classic SE FF and RS fluing



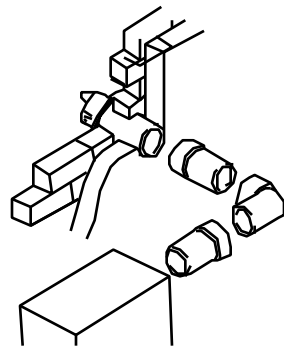
## ROOF FLUE SYSTEM (WITH SEALED SYSTEM UNIT)

| Flue   | Part Number                                      | Maximum flue length (mm) |
|--|--|--------------------------|
| Roof flue kit<br>+ 90° Elbow<br>+ Weather collar                           | 152254<br>156814<br>152258/152259*               | 1010                     |
| Roof flue kit<br>+ 90° Elbow<br>+ 2 x Extension pack D<br>+ Weather collar | 152254<br>156814<br>2 x 153883<br>152258/152259* | 1960                     |

**Note:** above applies to Classic SE 9 FF- 24 FF models only.

**Note:** this application not suitable for Classic SE 30 FF.

**\*Note:** 152258: universal weather collar (suits any roof pitch); 152259: flat roof weather collar.



## HORIZONTAL FLUE (FROM SIDE OF BOILER) WITH 1 x 90° ELBOW

| Flue  | Part Number                    | Maximum flue length (mm)  |
|---|--------------------------------|---------------------------|
| Standard pack B<br>+ 90° Elbow<br>+ Extension pack D    | 150308<br>156814<br>153883     | Right: 1550<br>Left: 1550 |
| Standard pack B<br>+ 90° Elbow<br>+ 2 Extension packs D | 150308<br>156814<br>2 x 153883 | Right: 2000<br>Left: 2000 |

**Note:** above applies to Classic SE 9 FF- 24 FF models only.

**Note:** not suitable for Classic SE 30 FF.

## HORIZONTAL FLUE (FROM SIDE OF BOILER) WITH 2 x 90° ELBOW

| Flue   | Part Number                        | Maximum flue length (mm)  |
|--|------------------------------------|---------------------------|
| Standard pack B<br>+ 2 x 90° Elbow<br>+ 2 x Extension pack D | 150308<br>2 x 156814<br>2 x 153883 | Right: 1000<br>Left: 1000 |

**Note:** above applies to Classic SE 9 FF- 24 FF models only.

**Note:** not suitable for Classic SE 30 FF.

**Note:** each extension pack D to be cut to length retaining flared connector end.

## HORIZONTAL FLUE (FROM SIDE OF BOILER) WITH 2 x 45° ELBOW

| Flue   | Part Number                        | Maximum flue length (mm)  |
|--|------------------------------------|---------------------------|
| Standard pack B<br>+ 2 x 45° Elbow<br>+ 2 x Extension pack D | 150308<br>1 x 156816<br>2 x 153883 | Right: 1600<br>Left: 1600 |

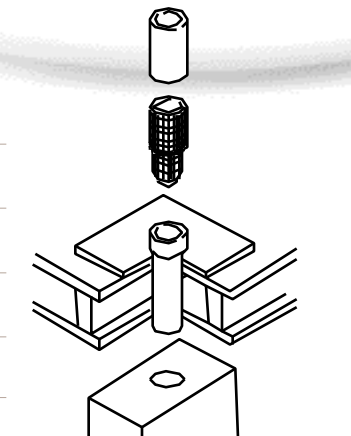
**Note:** above applies to Classic SE 9 FF- 24 FF models only.

**Note:** not suitable for Classic SE 30 FF.

**Note:** each extension pack D to be cut to length retaining flared connector end.

## VERTEX FLUE SYSTEM (FROM TOP OF BOILER) CLASSIC SE 18 FF AND 24 FF MODELS ONLY

| Flue                                      | Part Number          | Max. flue length (mm) |
|---|----------------------|-----------------------|
| Vertex flue kit<br>+ Extension pack D     | 157975<br>153883     | 1265                  |
| Vertex flue kit<br>+ 2 x Extension pack D | 157975<br>2 x 153883 | 2215                  |
| Vertex flue kit<br>+ 3 x Extension pack D | 157975<br>3 x 153883 | 3165                  |
| Vertex flue kit<br>+ 4 x Extension pack D | 157975<br>4 x 153883 | 4000                  |



### Vertex flue kit

Allows the boiler to be sited in a position where no access to an outside wall is available. Permits the concentric flue to run vertically from the top of the boiler and terminate for air supply within the roof space, a secondary flue continuing to an external terminal. It is also possible to incorporate two 90° elbows, though the primary flue length is reduced on such installations.

### Secondary flue

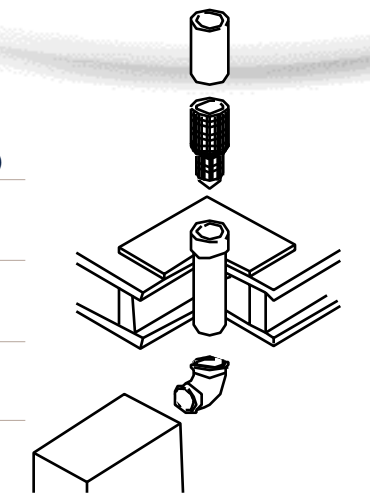
Suitable secondary flue systems are available from Rite-Vent and Selkirk Metalbestos.

Please consult individual suppliers.

- boiler can be sited centrally within a property, e.g. airing cupboard offering still further increased flexibility of siting.
- can be used on Classic SE 18 FF and 24 FF models only.
- one kit suits all appliances.
- perfect for installations where a long vertical fluing arrangement is required.

## VERTEX FLUE SYSTEM (FROM SIDE OF BOILER) CLASSIC SE 18 FF AND 24 FF MODELS ONLY (WITH SEALED SYSTEM UNIT)

| Flue   | Part Number                    | Max. flue length (mm) |
|--|--------------------------------|-----------------------|
| Vertex flue kit<br>+ 90° Elbow<br>+ Extension pack D     | 157975<br>156814<br>153883     | 1215                  |
| Vertex flue kit<br>+ 90° Elbow<br>+ 2 x Extension pack D | 157975<br>156814<br>2 x 153883 | 2165                  |
| Vertex flue kit<br>+ 90° Elbow<br>+ 3 x Extension pack D | 157975<br>156814<br>3 x 153883 | 3000                  |



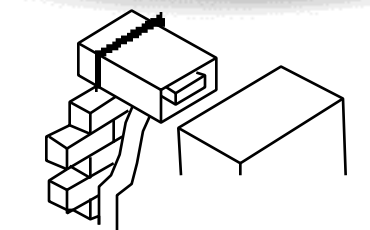
# RS fluing

## Cast iron wall hung boiler, room sealed (RS) balanced flue type

### HORIZONTAL FLUE (FROM BACK OF BOILER)

| Flue                | Part Number | Wall thickness |
|---------------------|-------------|----------------|
| Standard pack B     | 137601      | 229-305        |
| Alternative pack C  | 137600      | 114-191        |
| Alternative pack B1 | 137602      | 318-394        |

- pack B supplied unless otherwise specified.
- pack B1 and C can be supplied in lieu of pack B when ordered with boiler.



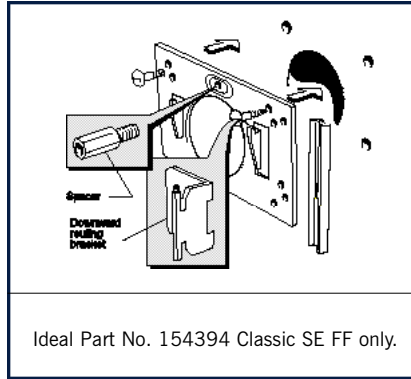
Maximum secondary flue length at maximum boiler input:

- 18 FF - 6 metres
- 24 FF - 7 metres
- 18P FF - 6 metres
- 24P FF - 7 metres.

# Classic SE extras and accessories

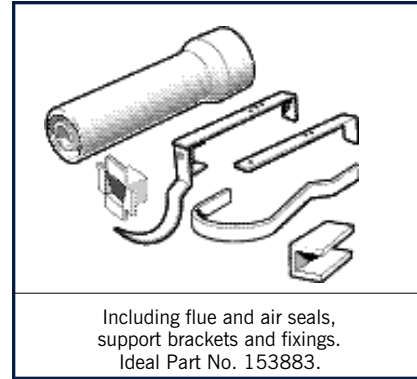
There are many extras and accessories available for use with all the Ideal appliances. All are competitively priced and readily available.

**Downward piping kit**



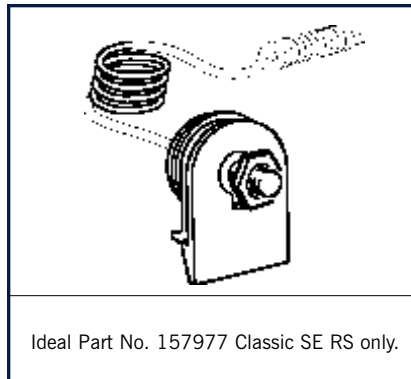
Ideal Part No. 154394 Classic SE FF only.

**Flue extension kit Pack D**



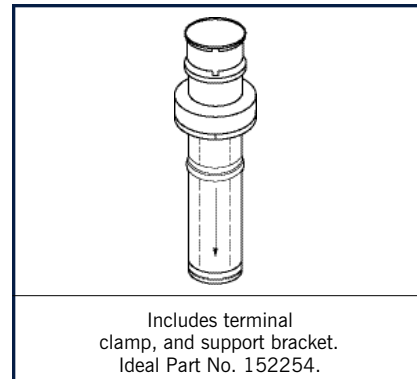
Including flue and air seals, support brackets and fixings. Ideal Part No. 153883.

**Overheat thermostat kit**



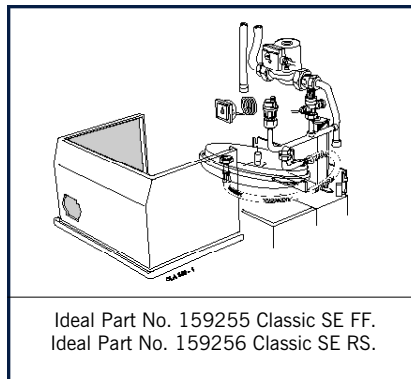
Ideal Part No. 157977 Classic SE RS only.

**Roof flue kit**



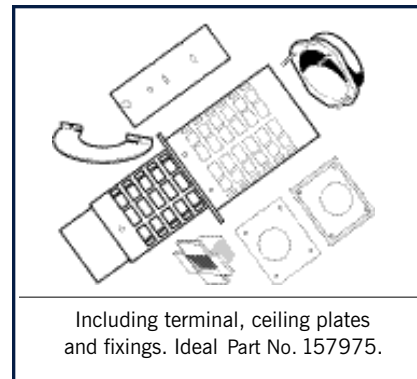
Includes terminal clamp, and support bracket. Ideal Part No. 152254.

**Sealed system kit**



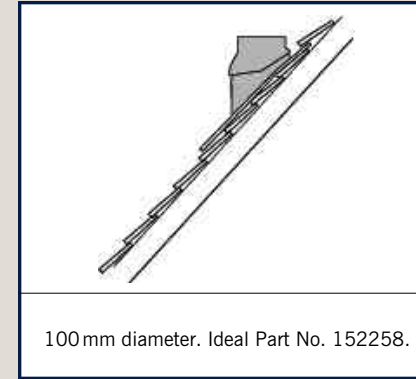
Ideal Part No. 159255 Classic SE FF.  
Ideal Part No. 159256 Classic SE RS.

**Vertex flue kit (18 FF & 24 FF models only)**



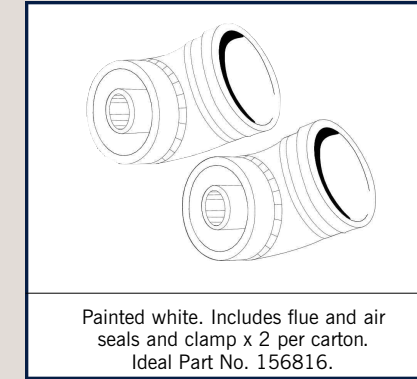
Including terminal, ceiling plates and fixings. Ideal Part No. 157975.

**Weather Collar - universal**



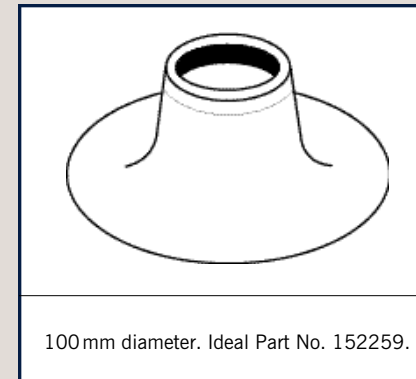
100mm diameter. Ideal Part No. 152258.

**45° Elbow kit - 100mm diameter**



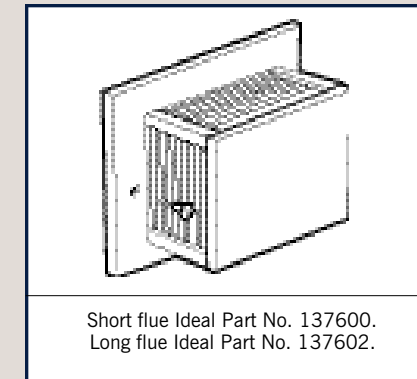
Painted white. Includes flue and air seals and clamp x 2 per carton. Ideal Part No. 156816.

**Flat roof weather collar**



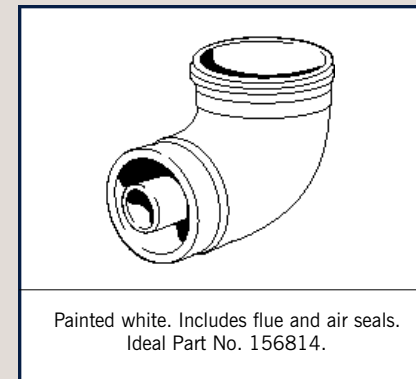
100mm diameter. Ideal Part No. 152259.

**RS flue options**



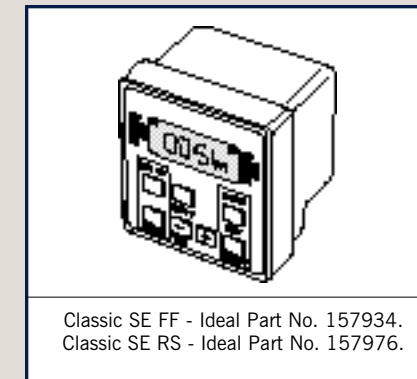
Short flue Ideal Part No. 137600.  
Long flue Ideal Part No. 137602.

**90° Flue elbow/turret**



Painted white. Includes flue and air seals. Ideal Part No. 156814.

**Programmer kit**



Classic SE FF - Ideal Part No. 157934.  
Classic SE RS - Ideal Part No. 157976.

# Mexico



One of the most reliable boilers money can buy, the Mexico has become the nation's favourite floor-standing boiler. Hardly surprising when you consider that it is the only floor-standing boiler on the market to offer RS, CF and FF product options.

#### Application and usage

The Mexico cast iron floor-standing boiler is suitable for installation on fully pumped and gravity systems. It is the ideal replacement floor-standing boiler, being easy to install, operate and service. The Mexico fits beneath a standard kitchen worktop and stands flush with adjacent kitchen cupboards.

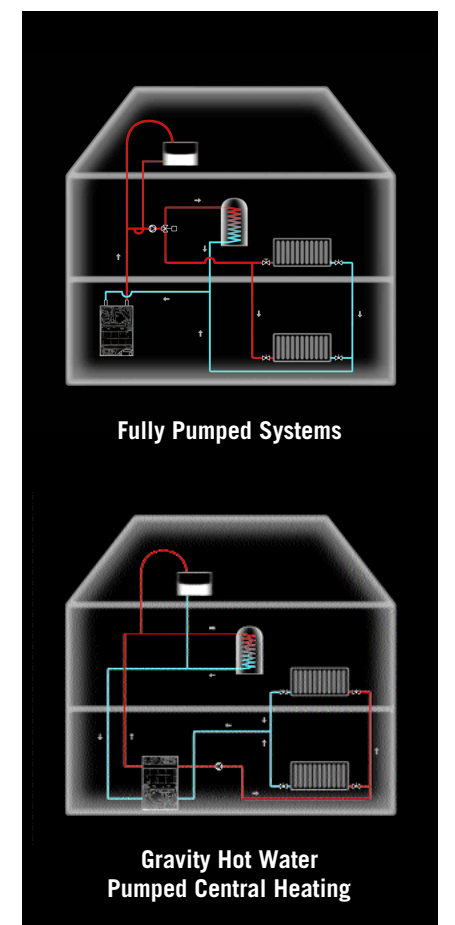
#### The Mexico in operation

The Mexico incorporates a variable thermostat for central heating control which is adjustable from 60°C to 82°C. The Mexico has a wide range of output models from 11.7 - 41kW (40,000 - 140,000Btu/h), making it suitable for the majority of house types.

#### Mexico Slimline

The Mexico is available as a slimline model designed to meet specific developer needs. The Mexico Slimline fits beneath a standard kitchen worktop and stands in line with adjacent kitchen cupboards. Its dimensions are H: 850 W: 255 D: 535. The Mexico Slimline shares all of the features and benefits of the Mexico.

The Mexico Slimline has a choice of 2 models the Mexico Slimline RS 445 (room sealed boiler) that offers an output of around 14kW and the Mexico Slimline CF 440 (open chimney flued boiler) that offers an output of around 12 kW.



SEDBUK rating

**D**

# Mexico FF-technical data

## PERFORMANCE DATA

| Model  |       | FF 440 | FF 450 | FF 460 | FF 470 | FF 480 | FF 4100 | FF 4125 |
|--------|-------|--------|--------|--------|--------|--------|---------|---------|
| Output | kW    | 11.7   | 14.7   | 17.6   | 20.5   | 23.4   | 29.3    | 36.6    |
|        | btu/h | 40,000 | 50,000 | 60,000 | 70,000 | 80,000 | 100,000 | 125,000 |

## INSTALLATION DATA

| Model                 |   | FF 440        | FF 450 | FF 460 | FF 470 | FF 480 | FF 4100 | FF 4125 |
|-----------------------|---|---------------|--------|--------|--------|--------|---------|---------|
| Gas supply connection |   | Rc ½          | Rc ½   | Rc ½   | Rc ½   | Rc ½   | Rc ½    | Rc ¾    |
| Flow connection       |   | Rc 1 (1" BSP) |        |        |        |        |         |         |
| Return connection     |   | Rc 1 (1" BSP) |        |        |        |        |         |         |
| Maximum static        | m | 30.5          |        |        |        |        |         |         |
| Electrical supply     |   | 230V - 50Hz   |        |        |        |        |         |         |
| Fuse rating           |   | 3A            |        |        |        |        |         |         |
| Water content         | L | 5.0           | 7.4    | 7.4    | 7.4    | 7.4    | 9.8     | 12.2    |

## CLEARANCE DATA

The following clearances are required for installation, servicing and replacement of parts.

| Front of boiler | Sides   | Top of boiler |
|-----------------|---------|---------------|
| 533mm           | 10-55mm | 20mm          |

**Note:** This product is not suitable for external installation. The wall on which the boiler is being mounted must be able to support its total weight. The wall will not require special protection, but if the unit is being fitted in a timber-frame building the guidelines set out in BS 5440: Part 1:1990 should be observed.

## The Ideal floor standing cast iron, fan-flued boiler

### Installation tips

Ideal recommend that a minimum heating load of 10% of heating output be controlled using a room thermostat, leaving all other rooms capable of being controlled by TRVs.

### Siting options

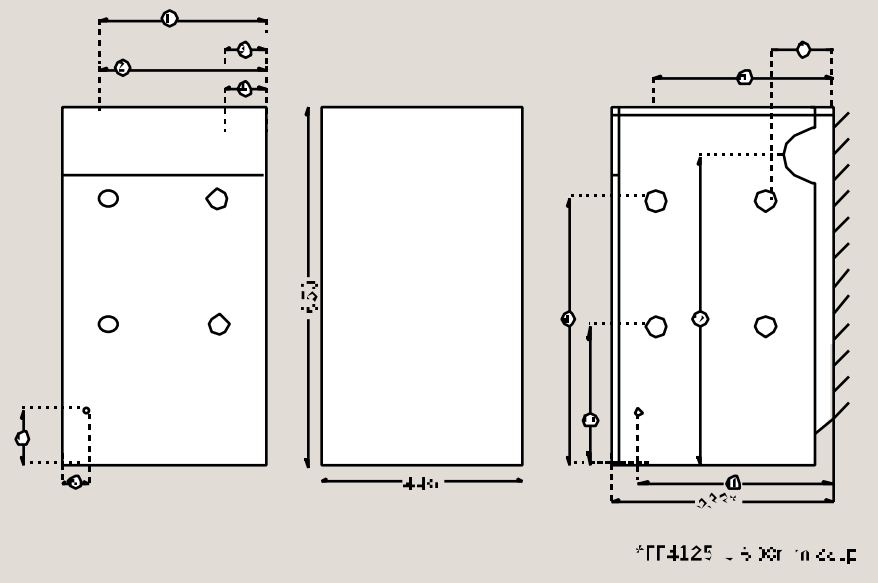
This floor standing boiler has longer fluing options giving increased siting flexibility.

## KEY

- ① Gas supply connection 34.1 mm
- ② Gas supply connection 34.1 mm
- ③ Pumped flow 41 mm
- ④ Pumped return 41 mm
- ⑤ Gas connection 28.2 mm
- ⑥ Gas connection 28.2 mm
- ⑦ Water connections 17.2 mm
- ⑧ Water connections 17.2 mm
- ⑨ Water connections 24.1 mm
- ⑩ Water connections 24.1 mm
- ⑪ Water connections 24.1 mm
- ⑫ Water connections 24.1 mm
- ⑬ Water connections 24.1 mm
- ⑭ Water connections 24.1 mm
- ⑮ Water connections 24.1 mm
- ⑯ Water connections 24.1 mm
- ⑰ Water connections 24.1 mm
- ⑱ Water connections 24.1 mm
- ⑲ Water connections 24.1 mm
- ⑳ Water connections 24.1 mm
- ㉑ Water connections 24.1 mm
- ㉒ Water connections 24.1 mm
- ㉓ Water connections 24.1 mm
- ㉔ Water connections 24.1 mm
- ㉕ Water connections 24.1 mm
- ㉖ Water connections 24.1 mm
- ㉗ Water connections 24.1 mm
- ㉘ Water connections 24.1 mm
- ㉙ Water connections 24.1 mm
- ㉚ Water connections 24.1 mm
- ㉛ Water connections 24.1 mm
- ㉜ Water connections 24.1 mm
- ㉝ Water connections 24.1 mm
- ㉞ Water connections 24.1 mm
- ㉟ Water connections 24.1 mm
- ㊱ Water connections 24.1 mm
- ㊲ Water connections 24.1 mm
- ㊳ Water connections 24.1 mm
- ㊴ Water connections 24.1 mm
- ㊵ Water connections 24.1 mm
- ㊶ Water connections 24.1 mm
- ㊷ Water connections 24.1 mm
- ㊸ Water connections 24.1 mm
- ㊹ Water connections 24.1 mm
- ㊺ Water connections 24.1 mm
- ㊻ Water connections 24.1 mm
- ㊼ Water connections 24.1 mm
- ㊽ Water connections 24.1 mm
- ㊾ Water connections 24.1 mm
- ㊿ Water connections 24.1 mm

## PIPEWORK CONNECTIONS AND PRODUCT DIMENSIONS

Flue plumbing is a by-product of efficiency. Please be aware of terminal positions to avoid complaints (see pages 33-36, fluing options).



For full technical details please refer to the Installation and Servicing Instructions provided with the product.

# Mexico RS-technical data

## PERFORMANCE DATA

| Model  |       | RS 440 | RS 450 | RS 460 | RS 470 | RS 485 | RS 4100 | RS 4125 |
|--------|-------|--------|--------|--------|--------|--------|---------|---------|
| Output | kW    | 11.7   | 14.7   | 17.6   | 20.5   | 24.9   | 29.3    | 36.6    |
|        | btu/h | 40,000 | 50,000 | 60,000 | 70,000 | 85,000 | 100,000 | 125,000 |

## INSTALLATION DATA

| Model                 |   | RS 440        | RS 450 | RS 460 | RS 470 | RS 485 | RS 4100 | RS 4125 |
|-----------------------|---|---------------|--------|--------|--------|--------|---------|---------|
| Gas supply connection |   | Rc ½          | Rc ½   | Rc ½   | Rc ½   | Rc ½   | Rc ½    | Rc ¾    |
| Flow connection       |   | Rc 1 (1" BSP) |        |        |        |        |         |         |
| Return connection     |   | Rc 1 (1" BSP) |        |        |        |        |         |         |
| Maximum static        | m | 30.5          |        |        |        |        |         |         |
| Electrical supply     |   | 230V - 50Hz   |        |        |        |        |         |         |
| Fuse rating           |   | 3A            |        |        |        |        |         |         |
| Water content         | L | 5.0           | 7.4    | 7.4    | 7.4    | 9.8    | 9.8     | 12.2    |

## CLEARANCE DATA

The following clearances are required for installation, servicing and replacement of parts.

| Front of boiler | Sides   | Top of boiler |
|-----------------|---------|---------------|
| 533mm           | 10-55mm | 20mm          |

**Note:** This product is not suitable for external installation. The wall on which the boiler is being mounted must be able to support its total weight. The wall will not require special protection, but if the unit is being fitted in a timber-frame building the guidelines set out in BS 5440: Part 1:1990 should be observed.

## The Ideal floor standing cast iron, room sealed boiler

### Installation tips

Ideal recommend that a minimum heating load of 10% of heating output be controlled using a room thermostat, leaving all other rooms capable of being controlled by TRVs.

### Siting options

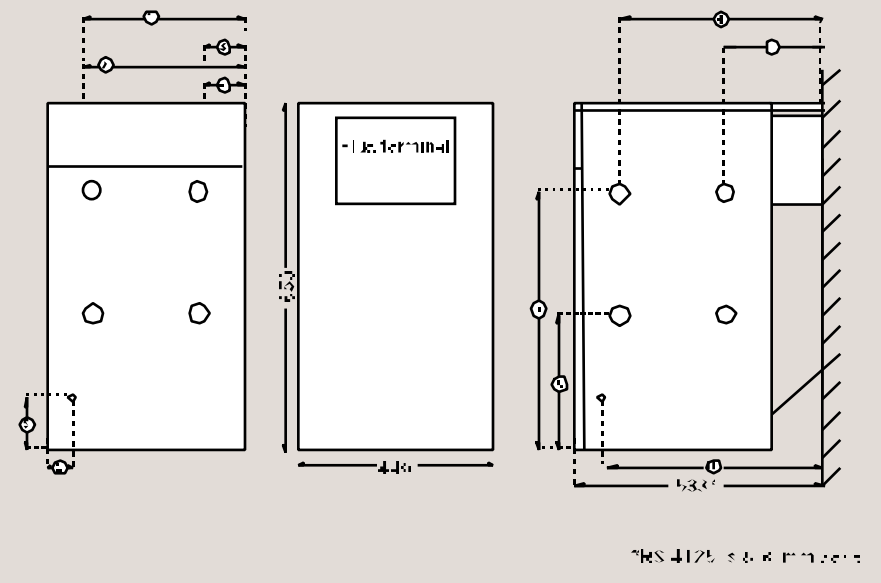
This floor standing room sealed boiler can be installed where external wall siting is required.

## KEY

- ① Gas supply connection 34.1 mm
- ② Gas supply connection 34.1 mm
- ③ Pumped flow 41 mm
- ④ Pumped return 41 mm
- ⑤ Gas connection 28.2 mm
- ⑥ Gas connection 28.2 mm
- ⑦ Water connections 17.2 mm
- ⑧ Water connections 17.2 mm
- ⑨ Water connections 24.1 mm
- ⑩ Water connections 24.1 mm
- ⑪ Water connections 24.1 mm
- ⑫ Water connections 24.1 mm
- ⑬ Water connections 24.1 mm
- ⑭ Water connections 24.1 mm
- ⑮ Water connections 24.1 mm
- ⑯ Water connections 24.1 mm
- ⑰ Water connections 24.1 mm
- ⑱ Water connections 24.1 mm
- ⑲ Water connections 24.1 mm
- ⑳ Water connections 24.1 mm
- ㉑ Water connections 24.1 mm
- ㉒ Water connections 24.1 mm
- ㉓ Water connections 24.1 mm
- ㉔ Water connections 24.1 mm
- ㉕ Water connections 24.1 mm
- ㉖ Water connections 24.1 mm
- ㉗ Water connections 24.1 mm
- ㉘ Water connections 24.1 mm
- ㉙ Water connections 24.1 mm
- ㉚ Water connections 24.1 mm
- ㉛ Water connections 24.1 mm
- ㉜ Water connections 24.1 mm
- ㉝ Water connections 24.1 mm
- ㉞ Water connections 24.1 mm
- ㉟ Water connections 24.1 mm
- ㊱ Water connections 24.1 mm
- ㊲ Water connections 24.1 mm
- ㊳ Water connections 24.1 mm
- ㊴ Water connections 24.1 mm
- ㊵ Water connections 24.1 mm
- ㊶ Water connections 24.1 mm
- ㊷ Water connections 24.1 mm
- ㊸ Water connections 24.1 mm
- ㊹ Water connections 24.1 mm
- ㊺ Water connections 24.1 mm
- ㊻ Water connections 24.1 mm
- ㊼ Water connections 24.1 mm
- ㊽ Water connections 24.1 mm
- ㊾ Water connections 24.1 mm
- ㊿ Water connections 24.1 mm

## PIPEWORK CONNECTIONS AND PRODUCT DIMENSIONS

Flue plumbing is a by-product of efficiency. Please be aware of terminal positions to avoid complaints (see page 33-36, fluing options).



For full technical details please refer to the Installation and Servicing Instructions provided with the product.



# Mexico CF-technical data

## PERFORMANCE DATA

| Model              |       | CF 445 | CF 455 | CF 465 | CF 475 | CF 495 | CF 4120 | CF 4140 |
|--------------------|-------|--------|--------|--------|--------|--------|---------|---------|
| Output             | kW    | 13.2   | 16.1   | 19.1   | 22.0   | 27.8   | 35.2    | 41.0    |
| Natural gas models | btu/h | 45,000 | 55,000 | 65,000 | 75,000 | 95,000 | 120,000 | 140,000 |

## INSTALLATION DATA

| Model                 |   | CF 445        | CF 455 | CF 465 | CF 475 | CF 495 | CF 4120 | CF 4140 |
|-----------------------|---|---------------|--------|--------|--------|--------|---------|---------|
| Gas supply connection |   | Rc 1/2        | Rc 1/2 | Rc 1/2 | Rc 1/2 | Rc 1/2 | Rc 1/2  | Rc 3/4  |
| Flow connection       |   | Rc 1 (1" BSP) |        |        |        |        |         |         |
| Return connection     |   | Rc 1 (1" BSP) |        |        |        |        |         |         |
| Maximum static        | m | 30.5          |        |        |        |        |         |         |
| Electrical supply     |   | 230V ~ 50Hz   |        |        |        |        |         |         |
| Fuse rating           |   | 3A            |        |        |        |        |         |         |
| Water content         | L | 7.4           | 7.4    | 7.4    | 7.4    | 9.8    | 12.2    | 14.6    |

## CLEARANCE DATA

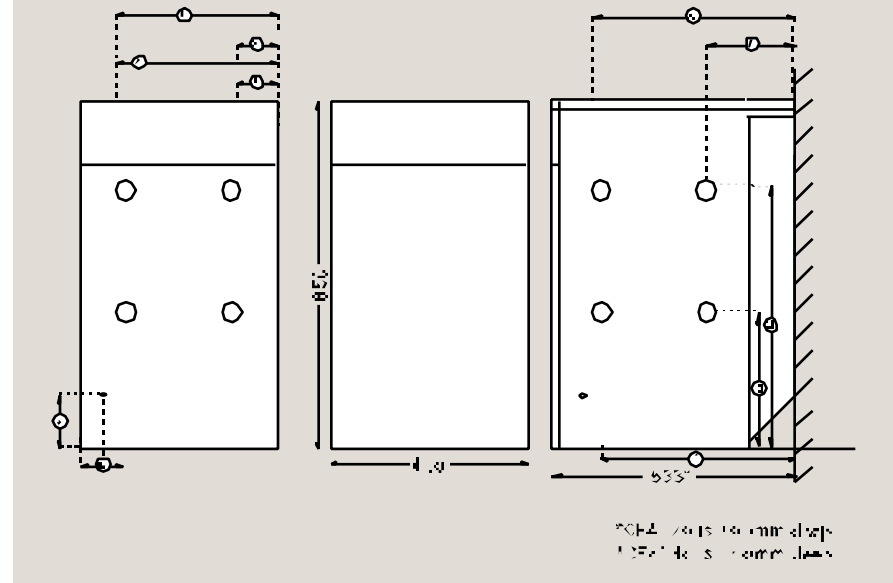
The following clearances are required for installation, servicing and replacement of parts.

| Front of boiler | Sides     | Top of boiler |
|-----------------|-----------|---------------|
| 533 mm          | 10-150 mm | 20 mm         |

**Note:** This product is not suitable for external installation. The wall on which the boiler is being mounted must be able to support its total weight. The wall will not require special protection, but if the unit is being fitted in a timber-frame building the guidelines set out in BS 5440: Part 1:1990 should be observed.

## PIPEWORK CONNECTIONS AND PRODUCT DIMENSIONS

Flue plumbing is a by-product of efficiency. Please be aware of terminal positions to avoid complaints (see page 33-36, fluing options).



CF4120/4140 150 mm slope  
CF4120/4140 150 mm slope

For full technical details please refer to the Installation and Servicing Instructions provided with the product.

## The Ideal floor standing cast iron, open chimney flued boiler

### Installation tips

Ideal recommend that a minimum heating load of 10% of heating output be controlled using a room thermostat, leaving all other rooms capable of being controlled by TRVs.

### Siting options

This floor standing boiler is suitable for natural draught and open flued siting.

# Mexico FF fluing

## HORIZONTAL FLUE (FROM SIDE OR REAR OF BOILER)

| Flue                                     | Part Number          | Maximum flue length (mm)                |
|--|----------------------|---|
| Standard pack B                          | 150308               | Right: 600<br>Left: 600<br>Rear: 600    |
| Standard pack B<br>+ Extension pack D    | 150308<br>153883     | Right: 1550<br>Left: 1550<br>Rear: 1550 |
| Standard pack B<br>+ 2 Extension packs D | 150308<br>2 x 153883 | Right: 2500<br>Left: 2500<br>Rear: 2500 |
| Standard pack B<br>+ 3 Extension packs D | 150308<br>3 x 153883 | Right: 3000<br>Left: 3000<br>Rear: 3000 |

**Note:** above applies to Mexico FF 440 - FF 480 models only.

**Note:** Mexico FF 4100: maximum flue length = 2000 mm.

**Note:** Mexico FF 4125: maximum flue length = 1000 mm.

## HORIZONTAL FLUE (FROM SIDE OF BOILER) WITH 1 x 90° ELBOW

| Flue  | Part Number                    | Maximum flue length (mm)  |
|---|--------------------------------|---------------------------|
| Standard pack B<br>+ 90° Elbow<br>+ Extension pack D    | 150308<br>156814<br>153883     | Right: 1550<br>Left: 1550 |
| Standard pack B<br>+ 90° Elbow<br>+ 2 Extension packs D | 150308<br>156814<br>2 x 153883 | Right: 2000<br>Left: 2000 |

**Note:** above applies to Mexico FF 440 - FF 480 models only.

**Note:** Mexico FF 4100: maximum flue length = 1000 mm.

**Note:** not suitable for Mexico FF 4125.

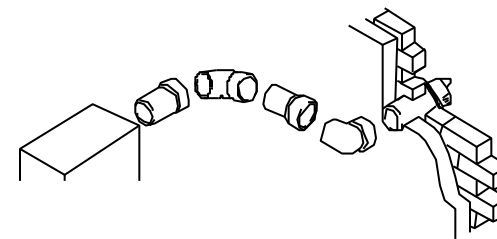
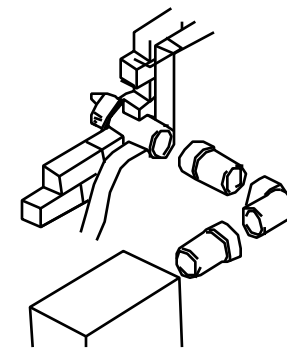
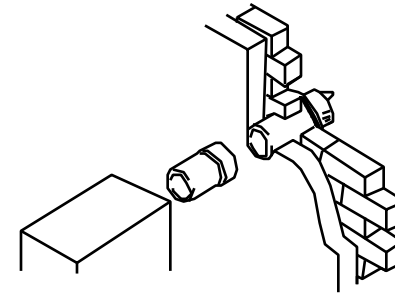
## HORIZONTAL FLUE (FROM SIDE OF BOILER) WITH 2 x 90° ELBOW

| Flue   | Part Number                        | Maximum flue length (mm)  |
|--|------------------------------------|---------------------------|
| Standard pack B<br>+ 90° Elbow<br>+ Extension pack D | 150308<br>2 x 156814<br>2 x 153883 | Right: 1000<br>Left: 1000 |

**Note:** above applies to Mexico FF 440 - FF 480 models only.

**Note:** Mexico FF 4100: maximum flue length = 1000 mm.

**Note:** each extension pack D to be cut to length retaining flared connection.



## KEY

- ① Gravity connector 300 mm
- ② Gravity connector 400 mm
- ③ Pumped flow 42 mm
- ④ Purge flow return 41 mm
- ⑤ Gas connection 150 mm
- ⑥ Gas connector 28 mm
- ⑦ Water connections 440-412 122 mm  
440 150 mm
- ⑧ Water connections 465-475 340 mm  
465 421 mm  
412 415 mm  
414 570 mm
- ⑨ Water connections 353 mm
- ⑩ Water connections 335 mm
- ⑪ Gas connection 445-475 410 mm  
465 427 mm  
412 415 mm  
414 570 mm

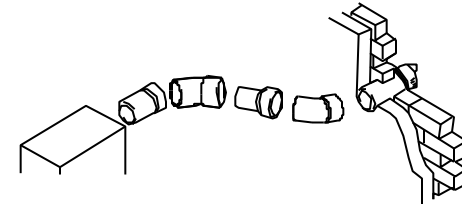
428 mm (CF4120 model)  
457 mm (CF4140 model)

# Mexico FF fluing

## HORIZONTAL FLUE (FROM SIDE OF BOILER) WITH 2 x 45° ELBOW

| Flue                   | Part Number | Maximum flue length (mm)  |
|------------------------|-------------|---------------------------|
| Standard pack B        | 150308      | Right: 1600<br>Left: 1600 |
| + 2 x 45° Elbow        | 1 x 156816  |                           |
| + 2 x Extension pack D | 2 x 153883  |                           |

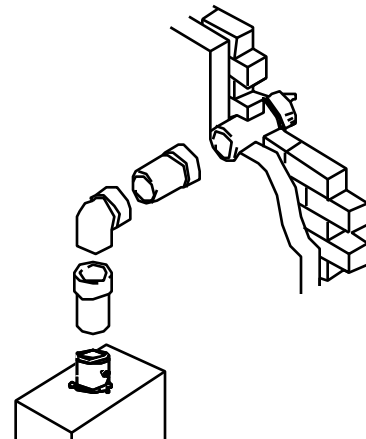
**Note:** above applies to Mexico FF 440 - FF 480 models only.  
**Note:** Mexico FF 4100: maximum flue length = 600mm.  
**Note:** not suitable for Mexico FF 4125.



## RAISED HORIZONTAL FLUE WITH 1 x 90° ELBOW

| Flue                    | Part Number | Maximum flue length (mm) |
|-------------------------|-------------|--------------------------|
| 90° Elbow/turret        | 156814      | 1550                     |
| + Standard pack B       | 150308      |                          |
| + Extension pack D      | 2 x 153883  |                          |
| 90° Elbow/turret        | 156814      | 2000                     |
| + Standard pack B       | 150308      |                          |
| + 2 x Extension packs D | 2 x 153883  |                          |

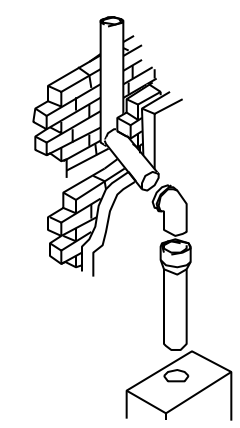
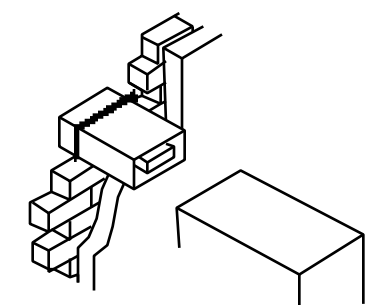
**Note:** above applies to Mexico FF 440 - FF 480 models only.  
**Note:** Mexico FF 4100: maximum flue length = 1000mm.  
**Note:** not suitable for Mexico FF 4125.



# Mexico RS and CF fluing

## HORIZONTAL FLUE (FROM BACK OF BOILER)

| Flue                | Part Number          | Wall thickness (mm) |
|---------------------|----------------------|---------------------|
| Standard pack B     | Super RS 440 - 470   | 229-305             |
|                     | Super RS 485         |                     |
|                     | Super RS 4100 - 4125 |                     |
| Alternative pack C  | Super RS 440 - 470   | 114-191             |
|                     | Super RS 485         |                     |
|                     | Super RS 4100 - 4125 |                     |
| Alternative pack B1 | Super RS 440 - 470   | 318-394             |
|                     | Super RS 485         |                     |
|                     | Super RS 4100 - 4125 |                     |



## OPEN FLUE (FROM TOP OF BOILER)

| Model             | Flue diameter (mm) |
|-------------------|--------------------|
| CF 445 to CF 465  | 102                |
| CF 475 & CF 495   | 127                |
| CF 4120 & CF 4140 | 152                |

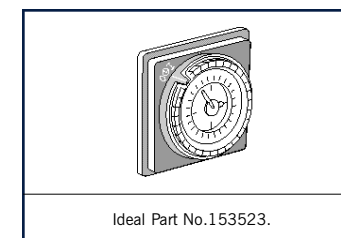
Details of flue designs and ventilation requirements are given in individual Installation and Servicing manuals.

For connection to conventional chimneys, proprietary flue pipe or pre-cast flue block systems.

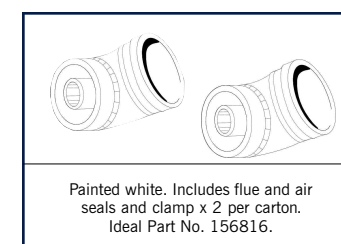
# Mexico extras and accessories

There are many extras and accessories available for use with all the Ideal appliances. All are competitively priced and readily available.

### Programmer kit



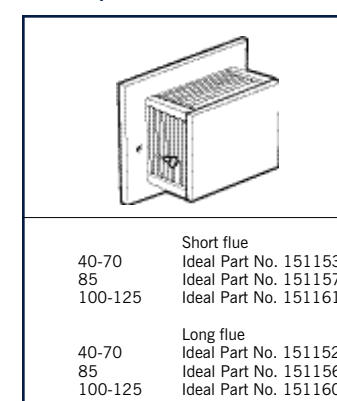
### 45° Elbow Kit-100mm diameter



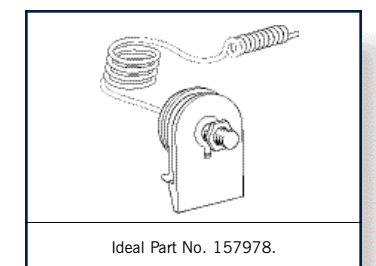
### 90° Flue elbow/turret



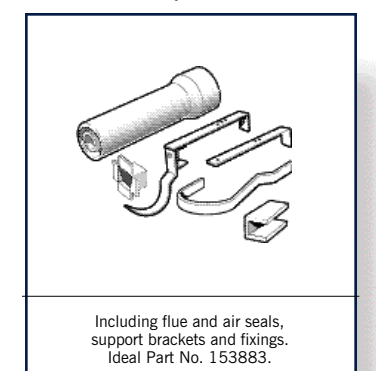
### RS flue options



### Overheat thermostat kit



### Flue extension kit pack D



# Mexico and Classic SE fluing

The previously shown Mexico and Classic SE range of Ideal boilers benefits from a wide variety of fluing options, making it possible for the installer to fit each unit safely and unobtrusively in almost any situation.

The following information sets out the alternatives that are available and demonstrates the siting flexibility that is an inherent part of all our boilers.

Our maximum flue length is 3m (horizontal). Deduct 1m for each 90° bend and 0.7m for each 45° bend.

## CLASSIC SE

### FLUECOMPONENTS

#### FF Flue options

|   | Part No. |
|---|----------|
| 'B Pack' standard flue 100mm diameter       | 150308   |
| 'D Pack' flue extension, 1000mm long        | 153883   |
| Roof flue kit                               | 152254   |
| Vertex flue kit - 18 FF & 24 FF models only | 157975   |
| Weather collar - universal                  | 152258   |
| Weather collar - flat roof                  | 152259   |
| 90° Elbow Kit - turret                      | 156814   |
| 45° Elbow Kit                               | 156816   |

#### RS Flue options

|   |        |
|---|--------|
| 'B Pack' Standard flue: wall thickness 229-305 mm     | 137601 |
| 'C Pack' Short flue option: wall thickness 114-191 mm | 137600 |
| 'B1 Pack' Long flue option: wall thickness 318-394 mm | 137602 |

## MEXICO

### FLUECOMPONENTS

#### FF Flue options

|  | Part No. |
|--|----------|
| 'B Pack' standard flue 100 mm diameter | 150308   |
| 'D Pack' flue extension, 1000 mm long  | 153883   |
| 90° Elbow kit - turret                 | 156814   |
| 45° Elbow kit                          | 156816   |

#### RS Flue options

|  |             |        |
|--|-------------|--------|
| 'B Pack' Standard flue: wall thickness 229-305 mm      | 440-470     | 151151 |
| 'B Pack' Standard flue: wall thickness 229-305 mm      | 485         | 151155 |
| 'B Pack' Standard flue: wall thickness 229-305 mm      | 4100 & 4125 | 151159 |
| 'C Pack' Short flue options: wall thickness 114-191mm  | 440-470     | 151153 |
| 'C Pack' Short flue options: wall thickness 114-191mm  | 485         | 151157 |
| 'C Pack' Short flue options: wall thickness 114-191mm  | 4100 & 4125 | 151161 |
| 'B1 Pack' Long flue options: wall thickness 318-394 mm | 440-470     | 151152 |
| 'B1 Pack' Long flue options: wall thickness 318-394 mm | 485         | 151156 |
| 'B1 Pack' Long flue options: wall thickness 318-394 mm | 4100 & 4125 | 151160 |

# siting flexibility

## KEY TO ILLUSTRATION

| Terminal position   | Minimum spacing for Classic & Mexico |
|---|--------------------------------------|
| 1 a Directly BELOW an opening, air brick, opening window, etc.                | 300mm                                |
| b Directly ABOVE an opening, air brick, opening window, etc.                  | 300mm                                |
| c HORIZONTALLY to an opening, air brick, opening window, etc.                 | 300mm                                |
| 2 Below gutters, soil pipes or drain  | 25mm*                                |
| 3 Below eaves   | 25mm*                                |
| 4 Below balconies or car port roof  | 25mm*                                |
| 5 From vertical drain pipes and soil pipes                                    | 25mm*                                |
| 6 From an internal or external corner or to a boundary alongside the terminal | 25mm*                                |
| 7 Above adjacent ground, roof or balcony level                                | 300mm                                |
| 8 From a surface or a boundary facing the terminal                            | 600mm                                |
| 9 From a terminal facing a terminal   | 1200mm                               |
| 10 From an opening in a car port (e.g. door or window) into dwelling          | 1200mm                               |
| 11 Vertically from a terminal on the same wall                                | 1500mm                               |
| 12 Horizontally from a terminal on the same wall                              | 300mm                                |
| <b>Vertical flue</b>  |                                      |
| 13 Above a flat or pitched roof (to base of terminal)                         | 300mm                                |
| 14 From adjacent wall to flue   | 1000mm                               |

Table corresponds to BS5440 : Part1 :2000 except where marked\*

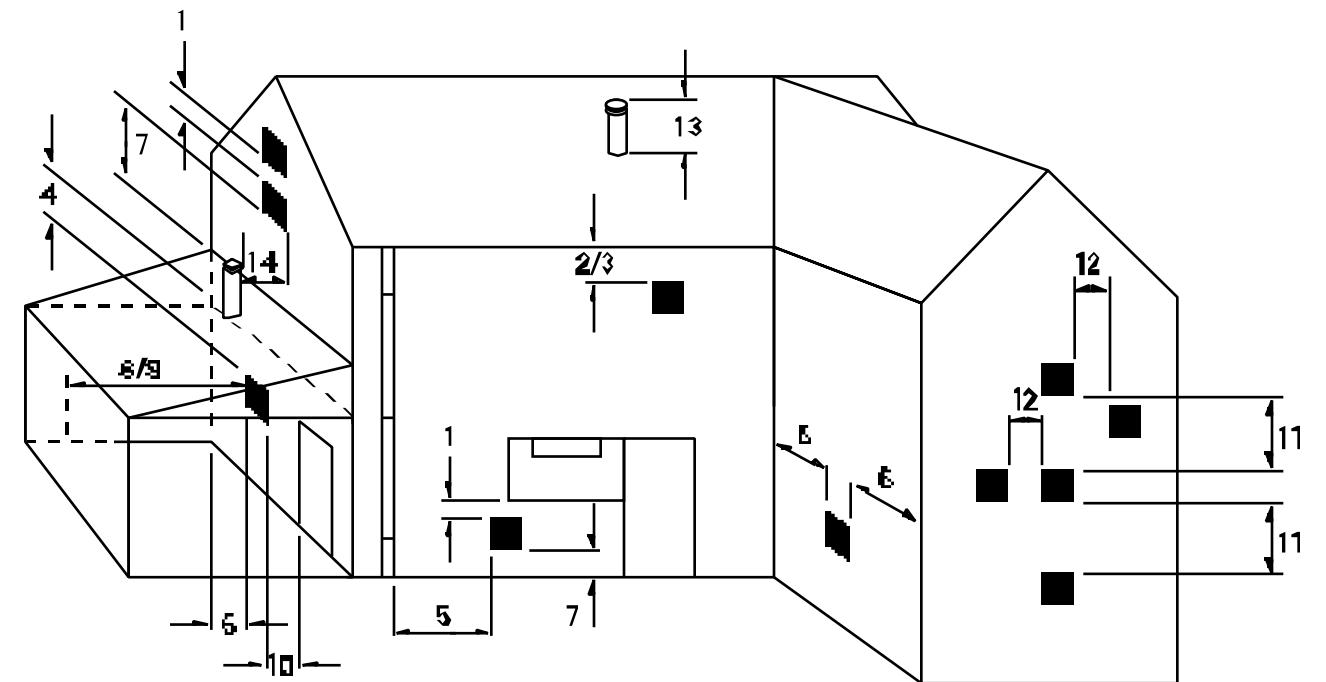
## Siting flexibility

There are a substantial number of fluing options available with our boilers, each giving excellent siting flexibility for almost all applications. These options include components such as roof flue and vertex flue kits which ensure that the installer encounters minimum restrictions.

All Ideal fluing parts are manufactured to the highest standards and are finished in white.

## Solutions for all applications

Ideal's range of fluing components has been planned to provide the installer with a choice of options which is capable of covering every application.



# support

## Training

An absolute commitment to customer training places Ideal above its competitors. Acknowledged as industry experts in standard and high-efficiency products, Ideal's training staff offer both theoretical and 'hands-on' instruction in product and system applications to installers and merchants through training schools, colleges and mobile units.

## After-sales

Ideal operates its own call centre and national network of engineers. Staff in the call centre are comprehensively trained to ensure that they provide technical solutions to the design, installation, service and maintenance of all Ideal products. Dedicated Technical Helplines, one for installers (01482 498663) and one for householders (01482 498660) ensure that the caller is greeted by a member of staff specifically trained to meet their needs.

The Customer Service Helplines operate at the following times:

Monday - Friday 8 am - 5 pm

Saturday 8 am - 2 pm

Sunday 8 am - 12 pm

## Service engineers

Ideal engineers only work on Ideal products. This together with ongoing training, a fully equipped van and the latest technological aids, underpin Ideal's first time fix capability.

## Spares

Guaranteed spare parts for all appliances are generally available for a minimum of 10 years after cessation of production. Parts can be easily sourced from Ideal's nationwide network of approved stockists.

For information about Ideal spare parts and for a list of stockists please call our Parts Department on 01482 498665. Alternatively you can learn about Ideal products and its Parts listings through the website or the Ideal Parts CD available through the Parts Department.

technical helpline

**01482 498663**

or alternatively fax us on 01482 498666

parts orderline

**01482 498665**

literature hotline

**0870 8498056**

householder helpline

**01482 498660**

training

**01482 498432**

or alternatively fax us on 01482 498605

sales orders and enquiries

**0870 8498056**

or alternatively fax us on 0870 8498058

[www.idealboilers.com](http://www.idealboilers.com)

[enquiries@idealboilers.com](mailto:enquiries@idealboilers.com)

Ideal Boilers is a member of the Benchmark Initiative and fully supports the aims of the programme. Benchmark has been introduced to improve standards of installation and commissioning of central heating systems in the UK and to encourage the regular servicing of all central heating systems to ensure safety and efficiency.

**BS EN ISO 9001:2000**

Ideal Boilers, PO Box 103,  
National Avenue,  
Kingston upon Hull HU5 4JN.

**Tel:** 01482 492251

**Fax:** 01482 448858

[www.idealboilers.com](http://www.idealboilers.com)

email: [enquiries@idealboilers.com](mailto:enquiries@idealboilers.com)



The code of practice for the installation,  
commissioning & servicing of central heating systems

**i** **BOILERS**  
**Ideal**  
ENGINEERED FOR PEACE OF MIND